

Oriental Mindoro



Facts and Figures 2015



Provincial Planning and Development Office



General Information

A. LOCATION

Oriental Mindoro is located in Region IV-B, otherwise known as the MIMAROPA Region. It lies 45 kilometers south of Batangas and 130 kilometers south of Manila.

B. BOUNDARY

It is bounded by Verde Island Passage on the North; Maestro del Campo Island and Tablas Strait on the East; Semirara Island on the South; and Occidental Mindoro on the West.

C. TOPOGRAPHY

Oriental Mindoro has a rugged terrain and an irregular coastline. Numerous rivers and streams traverse the province but none are navigable by large vessels.

D. CLIMATE

The province has two climate types: Type I and Type III. Type I is characterized by two pronounced seasons, dry and wet. Type III has no pronounced season, relatively dry from November to April and wet during the rest of the year.

E. LAND AREA

Oriental Mindoro has a total land area of 4,364.72 square kilometers or 436,472 hectares. It represents 1.5 % of the total land area of the country and 16% of the MIMAROPA Region.

F. LEGAL BASIS: RA 505 (Division of Mindoro)

G. DATE OF APPROVAL: November 15, 1950

H. CONGRESSIONAL DISTRICTS: two

I. NUMBER OF COMPONENT CITY: one

J. NUMBER OF MUNICIPALITIES: 14

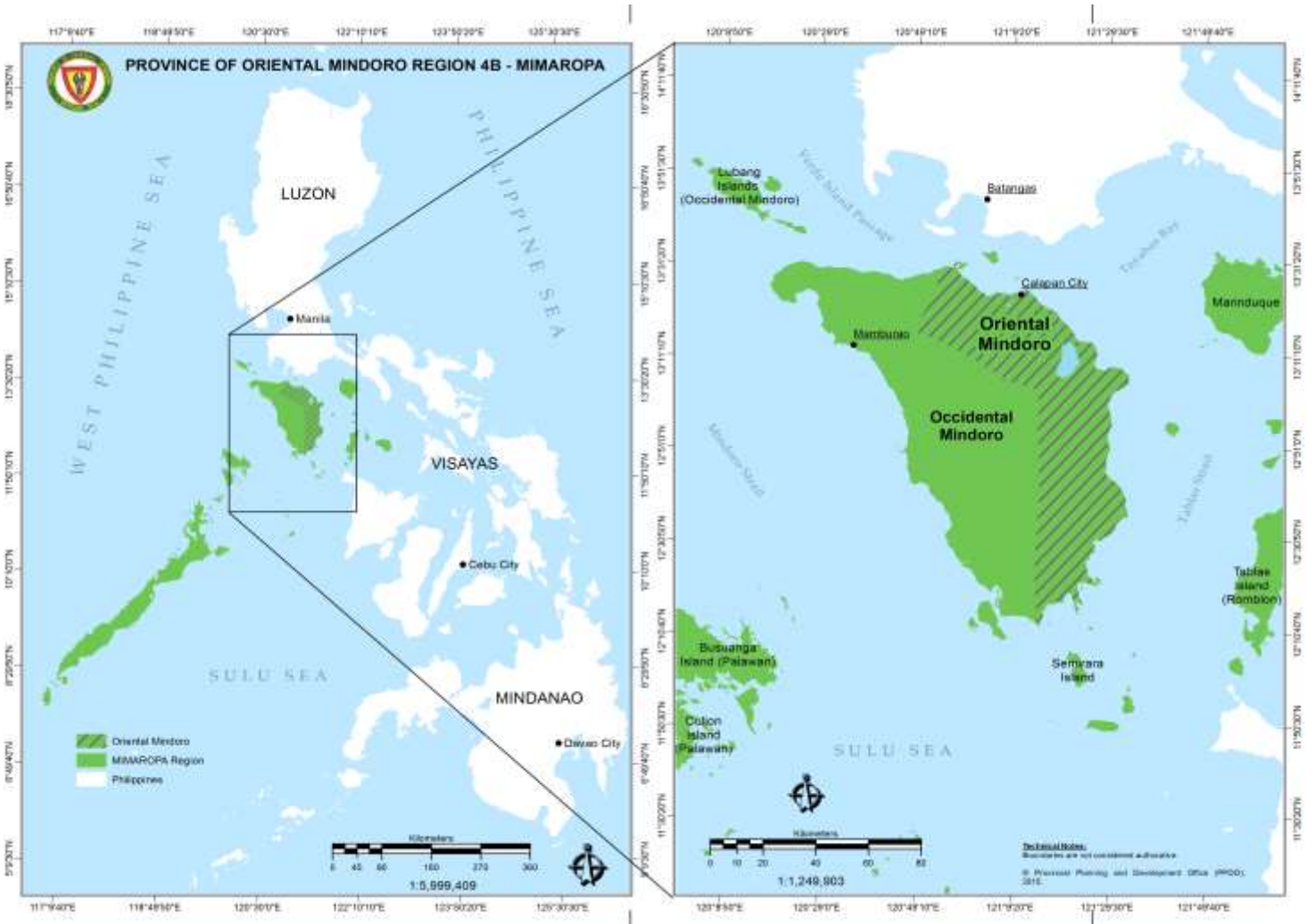
K. NUMBER OF BARANGAYS: 426

L. CAPITAL: Calapan City





Oriental Mindoro Location Map





Oriental Mindoro Base Map



Source: Provincial Planning and Development Office, 2015



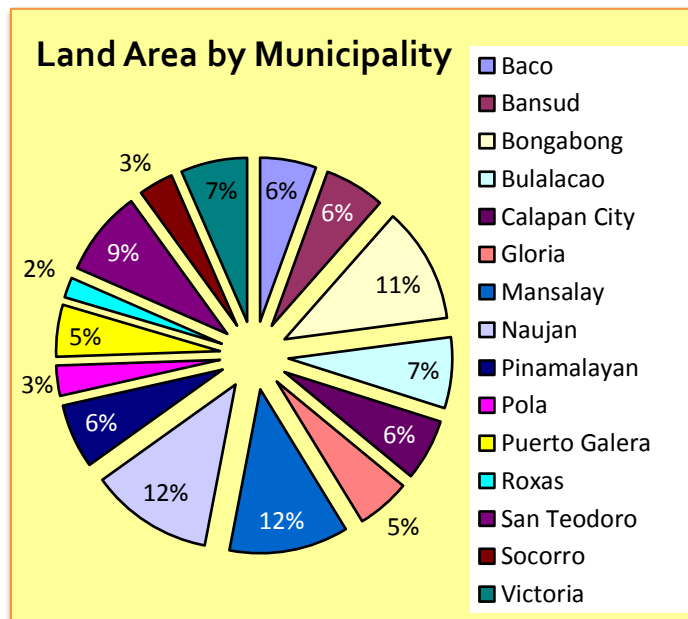


Land and other Natural Resources

A. LAND AREA BY MUNICIPALITY

Municipality	Land Area (sq. km)	% to Total
1st District		
Baco	241.70	5.54
Calapan City	265.20	6.08
Naujan	528.00	12.10
Pola	130.20	2.98
Puerto Galera	223.50	5.12
San Teodoro	369.10	8.46
Socorro	149.40	3.42
Victoria	286.00	6.55
2nd District		
Bansud	260.00	5.96
Bongabong	498.20	11.41
Bulalacao	305.12	6.99
Gloria	230.80	5.29
Mansalay	513.10	11.76
Pinamalayan	277.30	6.35
Roxas	87.10	1.99
ORIENTAL MINDORO	4,364.72	100.00

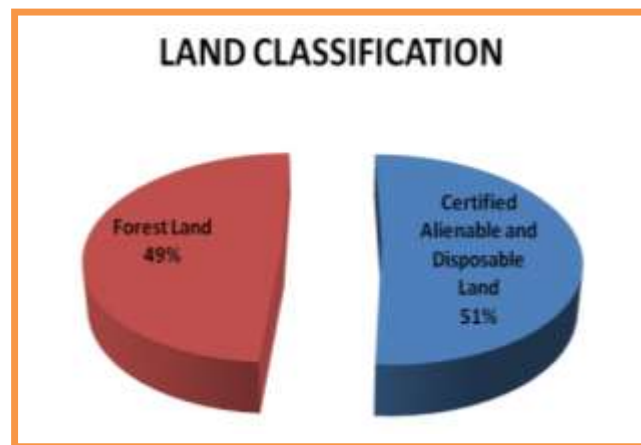
Source: Provincial Assessor Office, 2015



B. LAND CLASSIFICATION STATISTICS

Land Classification Statistics		Land Area (sq. km)
Certified Alienable and Disposable Land		2,228.95
Forest Land		2,135.77
Unclassified	1.48	
Classified	2,134.29	
Total		4,364.72

Source: Phil. Forestry Statistics, 2013



C. GEOGRAPHICAL ZONE SURFACES

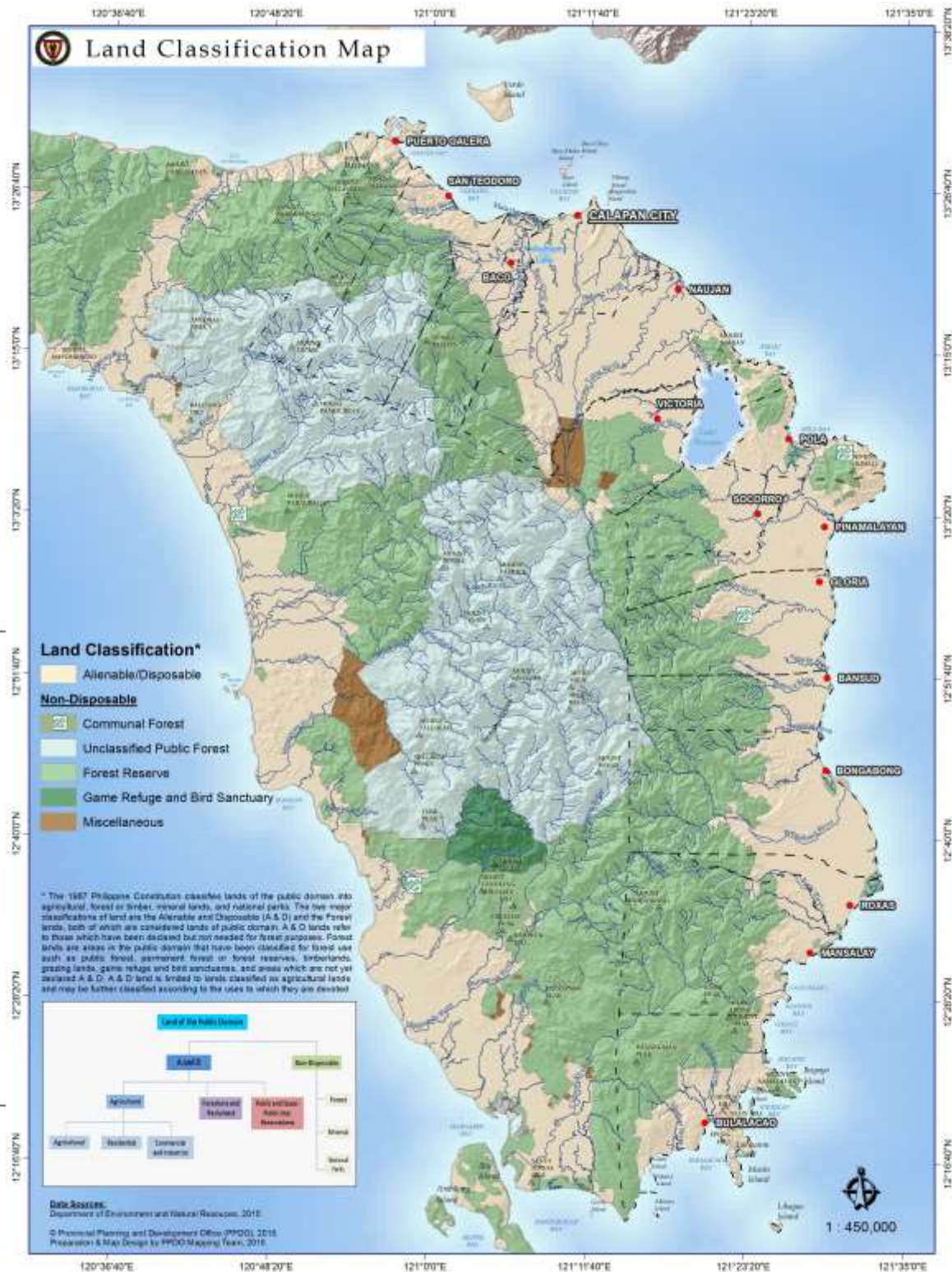
☼ Coastal Areas	342.45 km
☼ Lake Areas	81.28 sq. km
☼ Riparian areas, rich fertile valleys and mountainous areas	89% of its total land mass

Source: Provincial Environment and Natural Resources Office





Land Classification Map



Source: Provincial Planning and Development Office, 2015



D. MINERAL RESOURCES

1. Location of Metallic Mineral Resources

Mineral Commodity	Location
Gold	Baco (Dulangan and Binaybay), Puerto Galera
Copper	Naujan (San Andres), Socorro, Bongabong (Acliang and Pajo)
Chromite	Gloria (Banus 1 & 2), Bansud
Nickel	Bansud, Bongabong, Victoria
Iron	Baco (Binaybay), Puerto Galera (Balatero), San Teodoro
Marble	San Teodoro

Source: Mines & Geosciences Bureau, 2011 and Environment and Natural Resources Office, 2015

2. Non-Metallic Minerals (Gravel and Sand)

City/Municipality	Total [cu.m.]	Total Value (Php)	City/Municipality	Total [cu.m.]	Total Value (Php)
First District			Second District		
Baco	21,250	338,427.50	Roxas	23,000	307,457.50
Calapan City	45,500	573,445.00	Bansud	2,500	55,530.00
Naujan	455,250	6,204,465.00	Bongabong	217,000	3,608,832.00
Victoria	43,250	670,595.00	Bulalacao	250	11,717.50
Socorro	8,000	100,000.00	Gloria	39,000	601,827.50
			Mansalay	14,250	179,690.00
			Pinamalayan	31,250	397,667.50
1st District Total	573,250	7,886,932.50	2nd District Total	327,250	5,162,722.00
Oriental Mindoro	900,500	13,049,654.50			

Source: Environment and Natural Resources Office, 2015

E. FOREST COVER

Forest cover of MIMAROPA by province, December 31, 2010

FOREST AREA in (sq. km)				
PROVINCE	CLOSED	OPEN	MANGROVE	TOTAL
Marinduque	0	122.55	28.77	151.32
Occidental Mindoro	19.68	1,014.24	15.94	1,049.86
Oriental Mindoro	53.01	777.31	39.49	869.81
Palawan	868.77	5,415.90	638.21	6,922.88
Romblon	36.64	115.29	10.84	162.77
MIMAROPA	978.10	7,445.30	733.24	9,156.64

Source: <http://forestry.denr.gov.ph/landuse4b.htm>



Geology & Mineral Resources Oriental Mindoro

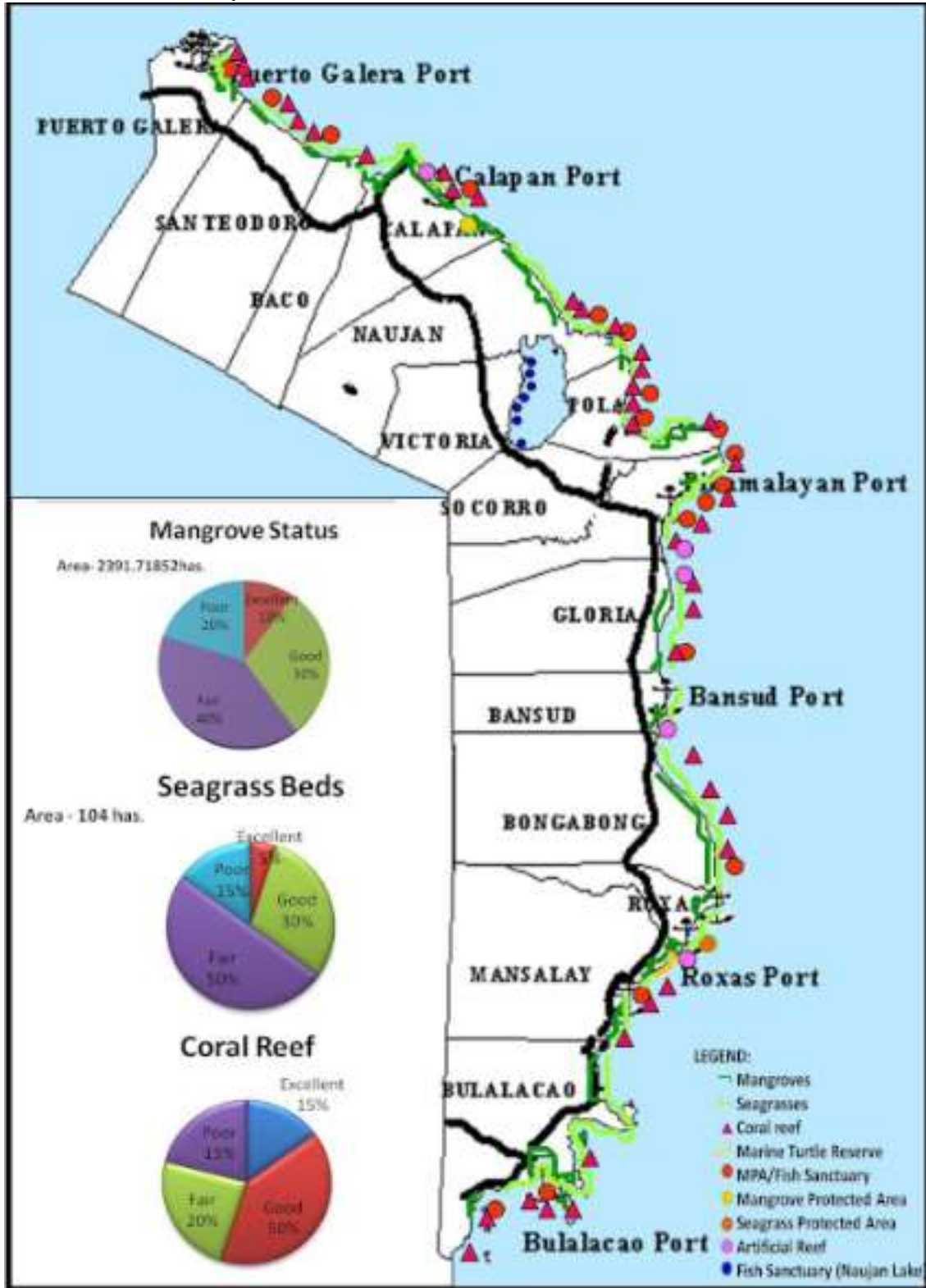


Source: Provincial Planning and Development Office, 2015



F. COASTAL RESOURCES

1. Coastal Resources Map of Oriental Mindoro



Source: Provincial Agriculture Office - Fisheries



2. Major Species Commonly Caught

- Tanigue, tambakol, malasugi, mamsa, lapu-lapu, galunggong, tuna, herrings, hasa-hasa, kalapato, caranx, dalagang-bukid, alumahan, bisugo, samaral, anchovies, sardines

3. Minor Species other than Fish

- Squid, shrimp, prawn, octopus, mudcrab, shells, lobster, cuttlefish, mussel, oyster, blue crabs, seaweed and sea cucumber

4. Marine Protected Areas as Percent of Total Area of Municipal Waters

CITY/MUNICIPALITY	MUNICIPAL WATERS	MPA (has.)	MPA Percentage
1st District			
Baco	16,004.16	152.53	0.950
Calapan City	26,726.81	37.44	0.140
Naujan	29,619.73	46.39	0.156
Pinamalayan	30,800.53	61.08	0.198
Pola	30,374.38	203.32	0.669
Puerto Galera	13,916.91	250.00	1.796
San Teodoro	4,520.27	112.47	2.488
2nd District			
Bansud	13,218.54	45.07	0.340
Bongabong	32,112.78	21.68	0.067
Bulalacao	59,250.33	238.06	0.401
Gloria	13,684.06	174.53	1.275
Mansalay	22,974.30	288.79	1.257
Roxas	16,965.92	30.00	0.176
ORIENTAL MINDORO	310,168.72	1661.36	0.535

Source: Provincial Agriculture Office, 2015



5. Established Marine Protected Areas

Location/ Municipality	Barangay	Name of MPA	Area (has.)	Year Established
Calapan City	Lazareto	Harka Piloto Fish Sanctuary	37.44	2003
	Silonay	Silonay Mangrove Conservation Area	41.00	2010
San Teodoro	Ilag	Punta Ilag Fish Sanctuary	23.10	2009
	Tacligan	Tamauyan Reef Fish Sanctuary	89.37	2006
Puerto Galera	San Antonio	Pto. Galera Fish Sanctuary	4,828.00 (250 NTZ)	2006
	Dulangan and Tabinay	Puerto Galera Mangrove Conservation and Ecotourism Area	17.8	2015
Naujan	Sitio Tujod, Herrera	Tujod Fish Sanctuary	30.00	2006
	Masaguing	Masaguing Fish Sanctuary	16.39	2010
Pola	Bacawan	Bacawan Fish Sanctuary	23.44	2006
	Puting Cacao	St. John the Baptist Fish Sanctuary	49.38	2010
	Tagumpay	St. Peter the Rock Fish Sanctuary	25.11	2010
	Calima	Stella Mariz Fish Sanctuary	30.12	2013
	Misong	Song of the Sea Fish Sanctuary	60.61	2013
	Tiguihan	Kingfisher Fishery Reserve	14.66	2013
Pinamalayan	Ranzo	Ranzo Fish Sanctuary	16.39	2006
	Sitio Simboryo, Banilad	Banilad-Simboryo Fish Sanctuary	10.41	2010
	Sitio Ginapangan, Banilad	Banilad-Ginapangan Fish Sanctuary	10.28	2010
	Sitio Bulaklak, Pili	Pili Fish Sanctuary	24.00	2010
Gloria	Agsalin	Agsalin Fish Sanctuary	80.13	2003
	Sta. Theresa	Sta. Theresa Fishery Reserve	14.00	2013
	Tambong	Tambong Fishery Reserve	80.4	2013
Bansud	Proper Tiguisan	Bansud Fish Sanctuary	45.07	2012
Bongabong	Masaguisi	Masaguisi Fish Sanctuary	21.68	2006
Roxas	Paclasan	Paclasan Fish Sanctuary	30.00	2012
Mansalay	Palaypay Cove & Balanga Point, B. Del Mundo	Palaypay Cove Fish Sanctuary	82.79	2006
	Tikling Point, Sta. Brigida	Allegria Sea Turtle Habitat	934.61m. shoreline	2008
	Don Pedro & Cabalwa	Mangal Marine Protected Area	206.00	2014
Bulalacao	Balatasan	Balatasan Fish Sanctuary	179.00	1999
	Maasin	Maasin Fish Sanctuary	19.06	2014
	Maujao	Maujao Fish Sanctuary	40.00	2009
Baco	San Andres & Pulantubig	Baco Marine Protected Area	152.53 (32.71 NTZ)	2015

Source: Provincial Agriculture Office, 2015

Note: NTZ – No Take Zone

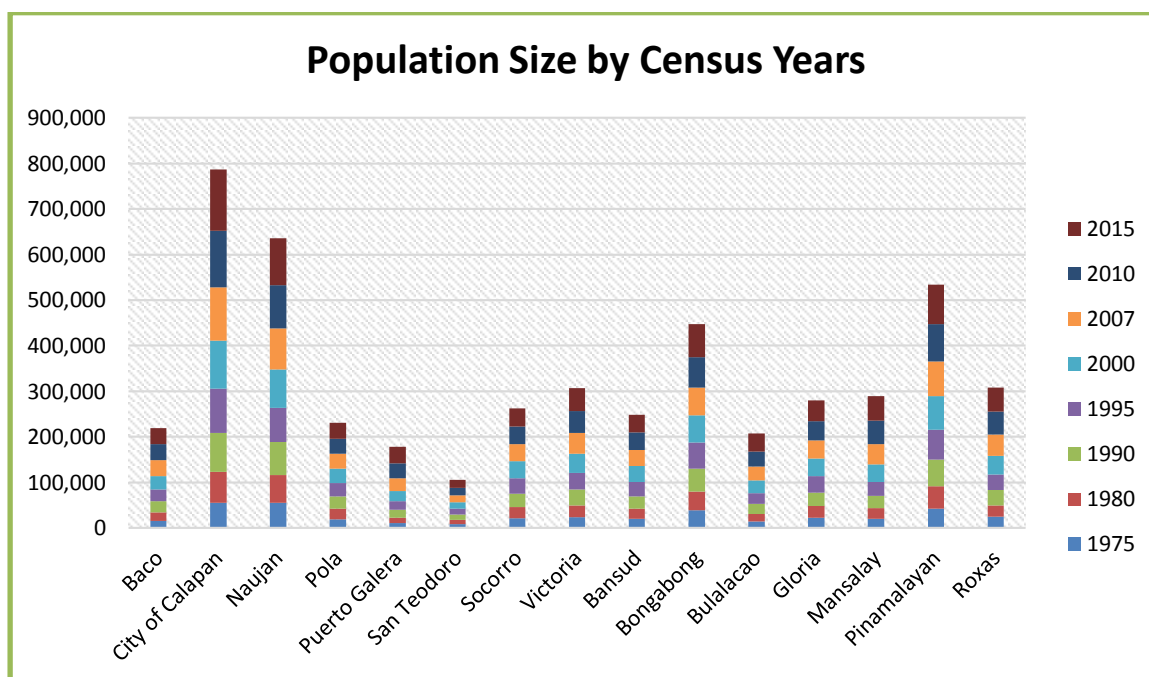


Demography

A. POPULATION SIZE BY MUNICIPALITY BY CENSUS YEARS

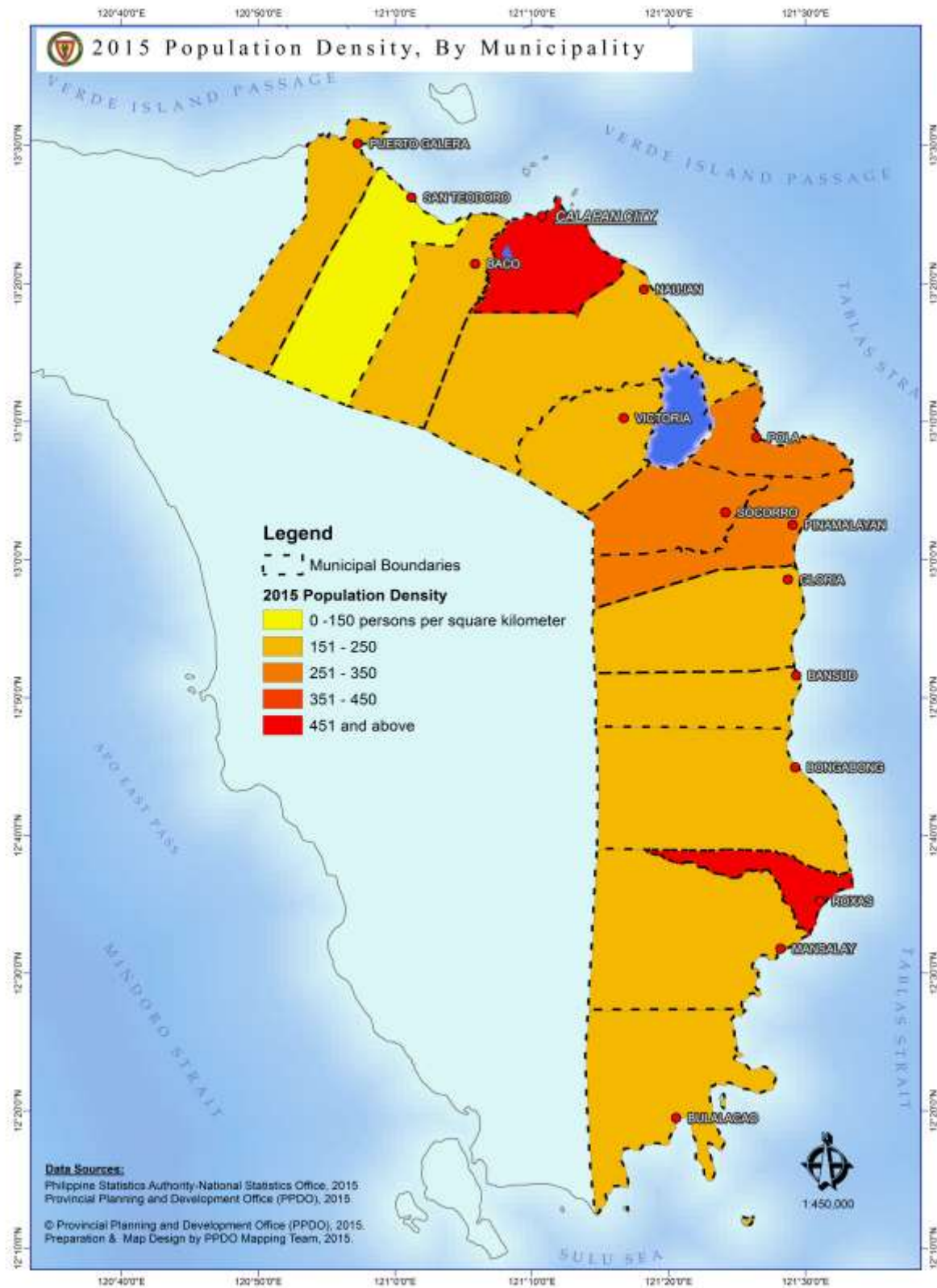
MUNICIPALITY	CENSUS YEARS							
	1975	1980	1990	1995	2000	2007	2010	2015
1st District								
Baco	15,738	18,607	23,800	25,915	30,167	34,127	35,060	35,060
City of Calapan	55,608	67,370	85,898	96,506	105,910	116,976	124,173	133,893
Naujan	54,641	61,216	72,203	75,726	83,892	90,629	94,497	102,998
Pola	19,072	23,188	26,833	29,156	31,938	32,635	32,984	34,701
Puerto Galera	10,129	12,306	17,200	19,485	21,925	28,035	32,521	36,606
San Teodoro	7,862	9,707	12,223	12,983	13,806	15,039	15,810	17,904
Socorro	20,868	24,332	29,806	34,182	37,176	38,052	38,348	39,099
Victoria	23,568	26,225	34,760	35,828	42,873	44,932	48,308	50,492
2nd District								
Bansud	20,095	22,614	26,225	31,901	35,032	35,664	38,341	38,341
Bongabong	38,358	41,719	50,213	57,403	59,477	61,127	66,569	72,073
Bulalacao	14,038	16,926	21,316	24,047	27,698	30,188	33,754	39,107
Gloria	22,249	25,291	30,102	35,771	38,667	40,561	42,012	45,073
Mansalay	19,544	23,548	27,515	29,765	39,041	43,974	51,705	54,533
Pinamalayan	42,701	48,431	58,777	65,903	72,951	77,119	81,666	86,172
Roxas	24,273	25,458	33,178	34,045	41,265	46,711	49,854	53,201
ORIENTAL MINDORO	388,744	446,938	550,049	608,616	681,818	735,769	785,602	844,059

Source: Philippine Statistics Authority





2015 Actual Population Density, By Municipality



Source: Provincial Planning and Development Office, 2015

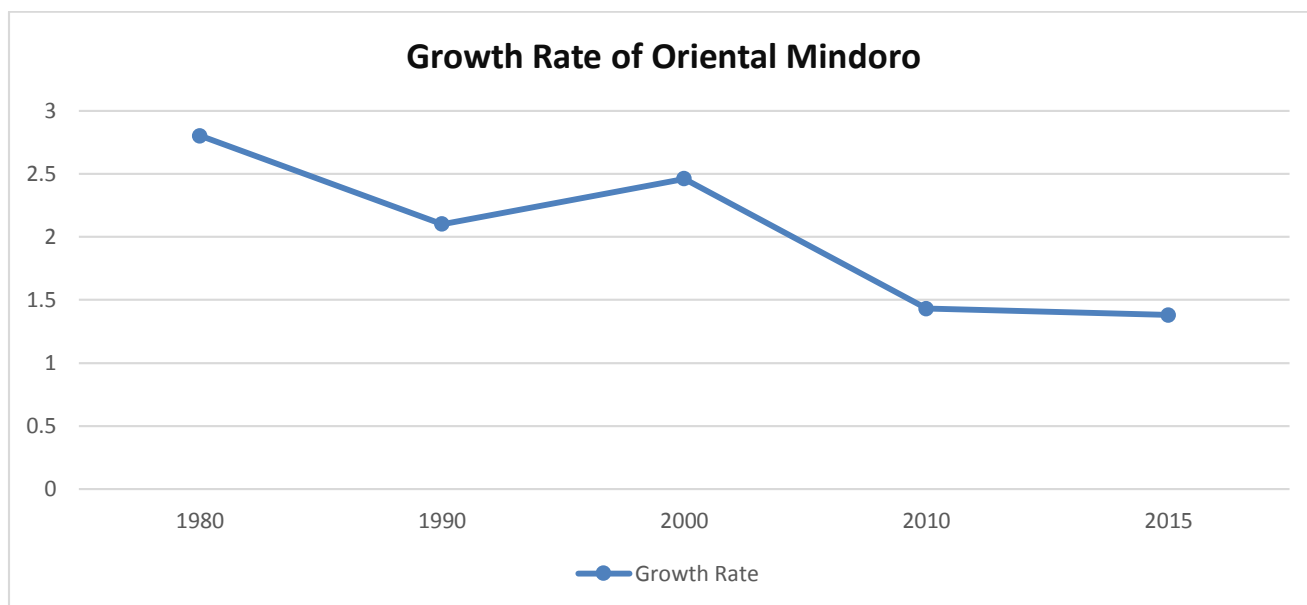




B. ACTUAL AND PROJECTED POPULATION AND NUMBER OF HOUSEHOLDS, GROWTH RATE BY MUNICIPALITY

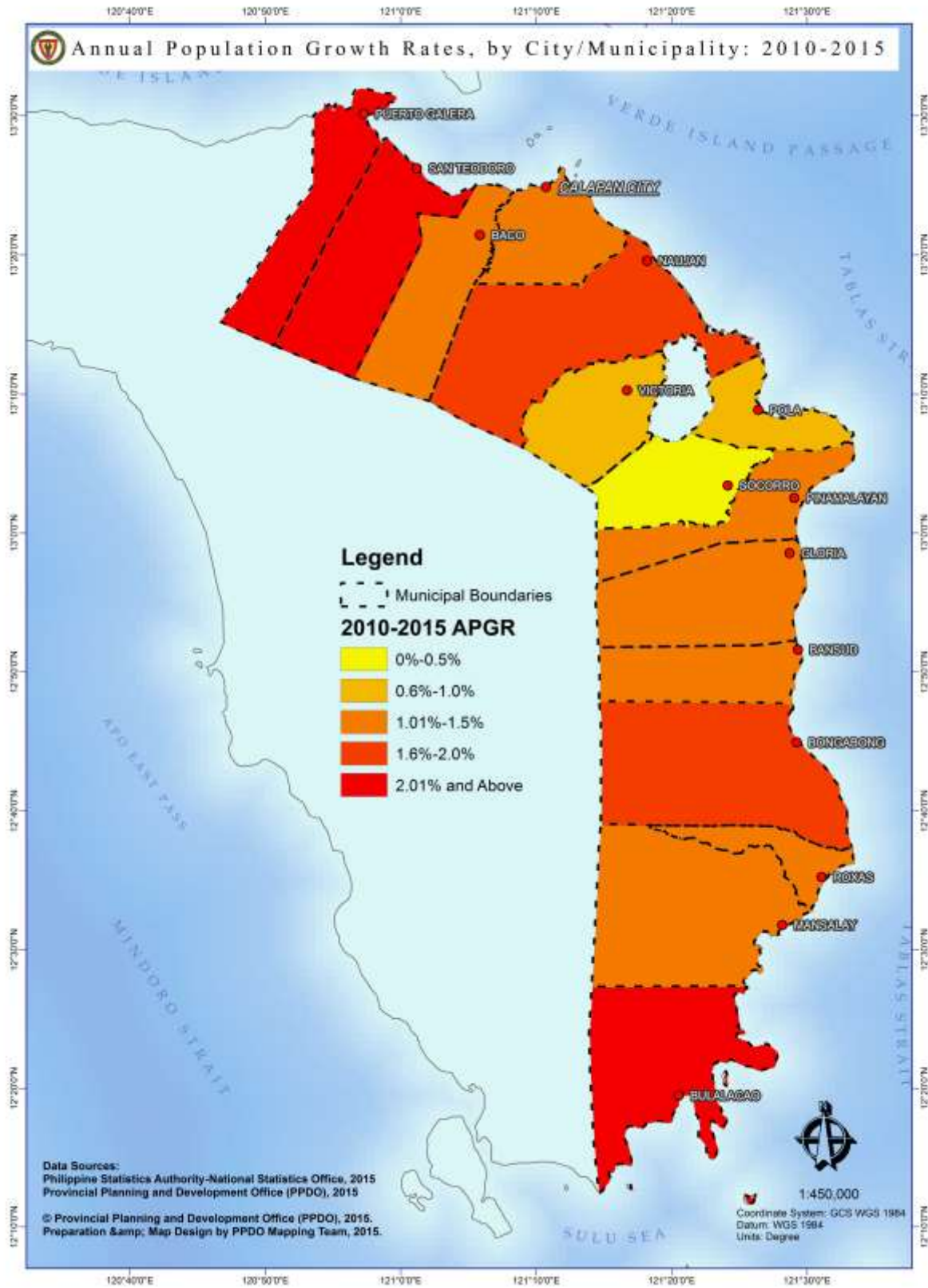
Municipality	2010		2015(Actual)		2025 (Projected)		Growth Rate %	
	Total Population	Total Household	Total Population	Total Household	Total Population	Total Household	2007-2010	2010-2015
1st District								
Baco	35,060	7,483	37,215	8,090	41,682	8,336	0.90	1.14
City of Calapan	124,173	27,242	133,893	29,754	154,472	30,894	2.01	1.44
Naujan	94,497	21,479	102,998	23,953	121,312	24,262	1.40	1.65
Pola	32,984	7,582	34,701	8,070	38,218	7,643	0.36	0.97
Puerto Galera	32,521	7,661	36,606	8,715	45,863	9,172	5.07	2.28
San Teodoro	15,810	3,508	17,904	3,978	22,696	4,539	1.68	2.40
Socorro	38,348	8,850	39,099	9,092	40,570	8,114	0.26	0.37
Victoria	48,308	10,485	50,492	10,976	54,952	10,990	2.44	0.85
2nd District								
Bansud	38,341	8,459	40,992	9,109	46,552	9,310	2.44	1.28
Bongabong	66,569	14,758	72,073	16,016	83,809	16,761	2.88	1.52
Bulalacao	33,754	7,427	39,107	86,690	51,746	10,349	3.79	2.84
Gloria	42,012	9,400	45,073	10,016	51,541	10,308	1.18	1.35
Mansalay	51,705	10,193	54,533	12,118	60,358	12,071	5.55	1.02
Pinamalayan	81,666	18,043	86,172	19,149	95,471	19,094	1.93	1.03
Roxas	49,854	10,386	53,201	11,822	60,178	12,035	2.19	1.24
ORIENTAL MINDORO	785,602	172,956	844,059	267,548	968,045	193,878	2.21	1.38

Source: Philippine Statistics Authority, 2010 Census of Population





Annual Population Growth Rates, By Municipality: 2010-2015



Source: Provincial Planning and Development Office, 2015





C. HOUSEHOLD POPULATION BY SEX AND CITY/MUNICIPALITY, ORIENTAL MINDORO, 2007 AND 2010

MUNICIPALITY	2010			2007		
	Total Household Population	Male	Female	Total Household Population	Male	Female
1st District						
Baco	35,060	18,030	17,030	34,127	17,654	16,473
Calapan City	123,480	62,076	61,404	116,399	58,463	57,936
Naujan	94,448	48,492	45,956	90,580	46,674	43,906
Pola	32,984	16,831	16,153	32,635	16,814	15,821
Puerto Galera	32,408	16,539	15,869	27,997	14,301	13,696
San Teodoro	15,801	8,070	7,731	15,027	7,724	7,303
Socorro	38,336	19,448	18,888	38,022	19,519	18,503
Victoria	48,308	24,664	23,644	44,932	23,211	21,721
2nd District						
Bansud	38,223	19,488	18,735	35,543	18,238	17,305
Bongabong	66,568	33,972	32,596	61,115	31,133	29,982
Bulalacao	33,753	17,438	16,315	30,188	15,522	14,666
Gloria	42,010	21,277	20,733	40,527	20,598	19,929
Mansalay	51,705	26,502	25,203	43,974	22,615	21,359
Pinamalayan	81,552	41,288	40,264	76,980	39,203	37,777
Roxas	49,739	25,256	24,483	46,614	23,603	23,011
ORIENTAL MINDORO	784,375	399,371	385,004	734,660	375,272	359,388

Source: Philippine Statistics Authority

D. LIFE EXPECTANCY

Life Expectancy at Birth*	2010-2015	2005-2010	2000-2005
Male	68.85	67.35	65.85
Female	73.69	72.19	70.69

* In years; medium assumption; 2000 Census-Based National, Regional and Provincial Projections

Source: PSA Quickstat, September 2015





E. PROJECTED POPULATION BY PROVINCE, MIMAROPA, 2013-2015

Province	Actual Population		Growth Rate 2000-2010	Population Projection		
	2000	2010		2013	2014	2015
Occidental Mindoro	380,250	452,971	1.76	477,311	485,712	494,261
Oriental Mindoro	681,818	785,602	1.43	819,789	831,512	843,403
Marinduque	217,392	227,828	1.60	238,940	242,763	246,647
Romblon	264,357	283,930	0.72	290,107	310,995	313,234
Palawan	593,500	771,667	2.66	834,899	857,107	879,906
Puerto Princesa City	161,912	222,673	3.24	245,026	252,965	261,161
MIMAROPA	2,299,229	2,744,671	1.79	2,906,071	2,958,090	3,011,040

Note: 2010 – Actual Philippine Statistics Authority Census of Population

F. URBAN-RURAL POPULATION, 2007 & 2010

Municipality	No. of Barangays			Population							
	Urban	Rural	Total	2007				2010			
				Urban	%	Rural	%	Urban	%	Rural	%
1st District											
Baco	1	26	27	2,717	7.96	31,410	92.04	2,846	8.12	32,214	91.88
Calapan City	5	57	62	20,127	17.21	96,849	82.79	18,131	14.60	106,042	85.40
Naujan	4	66	70	9,165	10.11	81,464	89.89	9,040	9.57	85,457	90.43
Pola	2	21	23	1,296	3.97	31,339	96.03	1,085	3.29	31,899	96.71
Puerto Galera	3	10	13	9,920	35.38	18,115	64.62	11,577	35.60	20,944	64.40
San Teodoro	1	7	8	1,990	13.23	13,049	86.77	1,734	10.97	14,076	89.03
Socorro	6	20	26	8,394	22.06	29,658	77.94	8,295	21.63	30,053	78.37
Victoria	7	25	32	14,626	32.55	30,306	67.45	16,212	33.56	32,096	66.44
2nd District											
Bansud	3	10	13	12,245	34.33	23,419	65.67	14,181	36.99	24,160	63.01
Bongabong	1	35	36	1,306	2.14	59,821	97.86	1,626	2.44	64,943	97.56
Bulalacao	4	11	15	8,858	29.34	21,330	70.66	10,624	31.47	23,130	68.53
Gloria	6	21	27	13,106	32.31	27,455	67.69	12,924	30.76	29,088	69.24
Mansalay	3	14	17	11,682	26.57	32,292	73.43	13,620	26.34	38,085	73.66
Pinamalayan	9	28	37	25,717	33.35	51,402	66.65	27,803	34.04	53,863	65.96
Roxas	4	16	20	16,748	35.85	29,963	64.15	18,151	36.41	31,703	63.59
Oriental Mindoro	59	367	426	157,897	21.46	577,872	78.54	167,849	21.37	617,753	78.63

Source: Philippine Statistics Authority, 2007 and 2010

Note: Details may not add up to totals due to rounding



G. POPULATION DENSITY

Municipality	GROSS POPULATION DENSITY (per sq.km.)		URBAN POPULATION DENSITY (per sq.km.)	
	2007	2010	2007	2010
1st District				
Baco	141	145	625	655
Calapan City	441	468	4541	4091
Naujan	172	179	466	460
Pola	251	253	25920	21700
Puerto Galera	125	146	249	291
San Teodoro	41	43	3618	3153
Socorro	255	257	252	249
Victoria	157	169	441	489
2nd District				
Bansud	137	147	992	1149
Bongabong	123	134	261	325
Bulalacao	99	111	99	119
Gloria	176	182	535	527
Mansalay	86	101	231	270
Pinamalayan	278	295	934	1010
Roxas	536	572	1174	1272
Oriental Mindoro	169	180	440	467

Source: Philippine Statistics Authority/ Provincial Planning and Development Office, 2007 and 2010

H. MANGYAN TRIBES BY MUNICIPALITY

Municipality	Tribes	Municipality	Tribes
First District		Second District	
Puerto Galera	Iraya	Pinamalayan	Tadyawan/Tau-buid
San Teodoro	Iraya, Alangan	Gloria	Tadyawan
Baco	Iraya, Alangan	Bansud	Buhid/Bangon
Naujan	Alangan, Tadyawan	Bongabong	Buhid/Bangon
Victoria	Alangan, Tadyawan, Hanunuo	Roxas	Buhid/Bangon
Socorro	Tadyawan	Mansalay	Hanunoo
Pola	Tadyawan	Bulalacao	Hanunoo

Source: Mangyan Mission and National Commission for Indigenous Peoples, 2015



I. MANGYAN HOUSEHOLDS BY SEX, 2008

Municipality	Number of Mangyan Households Population		
	Total	Male	Female
1st District			
Baco	4,995	2,568	2,427
Calapan City	117	52	65
Naujan	4,654	2,395	2,259
Pola	782	438	344
Puerto Galera	2,065	1,092	973
San Teodoro	2,506	1,355	1,151
Socorro	1,222	646	576
Victoria	1,500	803	697
2nd District			
Bansud	1,719	869	850
Bongabong	5,536	2,917	2,619
Bulalacao	10,195	5,307	4,888
Gloria	932	462	470
Mansalay	8,600	4,395	4,205
Pinamalayan	1,171	605	566
Roxas	2,111	1,110	1,001
Oriental Mindoro	48,105	25,014	23,091

Source: Community Based Monitoring System Survey, 2008





Economic Profile

A. AGRICULTURE

1. Rice Area by Municipality and Type

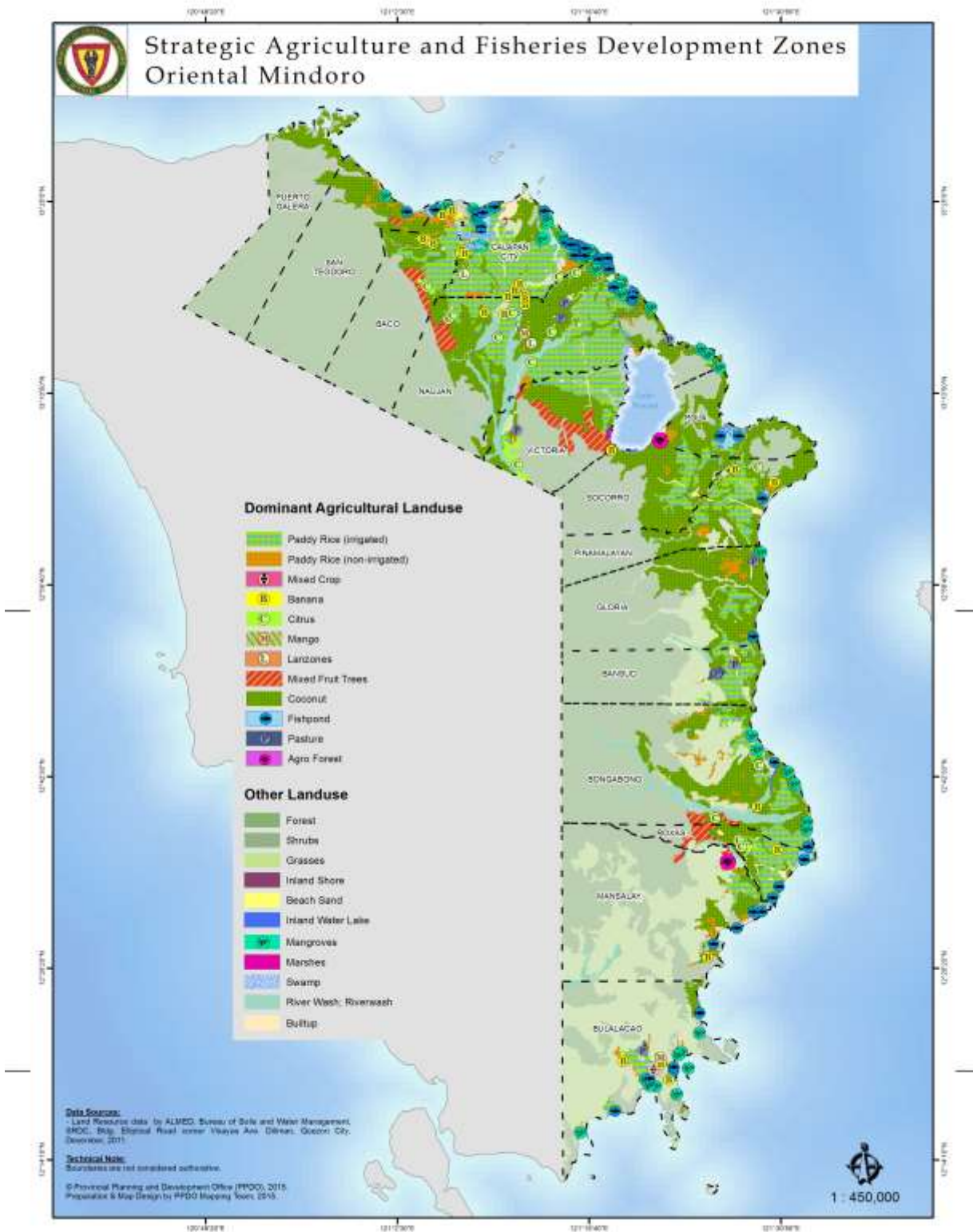
Municipality	Irrigated Area (ha)	Rainfed Area (ha)	Total Rice Area (ha)
1st District			
Baco	2,946.00	2,108.00	5,054.00
Calapan City	14,154.00	1,937.50	16,092.00
Naujan	23,191.00	5,656.00	28,847.00
Pola	1,903.50	796.50	2,700.00
Puerto Galera	4.00	4.00	8.00
San Teodoro	300.00	421.00	721.00
Socorro	3,341.00	595.00	3,936.00
Victoria	9,020.50	1,388.00	10,408.50
2nd District			
Bansud	5,353.50	432.50	5,786.00
Bongabong	9,150.00	2,168.50	11,318.50
Bulalacao	795.00	695.00	1,490.00
Gloria	4,922.50	364.00	5,286.50
Mansalay	3,476.00	2,002.00	5,478.00
Pinamalayan	7,079.50	658.00	7,737.50
Roxas	4,852.00	274.00	5,126.00
ORIENTAL MINDORO	90,489.00	19,500.00	109,989

Source: Provincial Agriculture Office, 2015





Strategic Agriculture and Fisheries Development Zones Oriental Mindoro



Source: Provincial Planning and Development Office, 2015





2. Irrigated Area by Type of Irrigation Facility by City/Municipality: 2015

Municipality	RIS (ha)	CIS (ha)	Pump/STW (ha)	TOTAL (ha)
1st District				
Baco	-	463.00	240.00	703.00
Calapan City	4031.95	-	-	4031.95
Naujan	380.00	760.00	438.72	1578.72
Pola	60.00	-	70.00	130.00
Puerto Galera	-	-	-	-
San Teodoro	-	-	-	-
Socorro	246.00	954.00	120.00	1320.00
Victoria	300.00	592.00	-	892.00
2nd District				
Bansud	926.00	1159.00	-	2085.00
Bongabong	-	1215.00	-	1215.00
Bulalacao	-	356.00	-	356.00
Gloria	-	1156.42	-	1156.42
Mansalay	-	917.00	-	917.00
Pinamalayan	2598.00	-	-	2598.00
Roxas	1223.00	25.00	-	1248.00
Oriental Mindoro	9,764.95	7,597.42	868.72	18,231.09

Notes: NIA-Assisted Irrigation Systems only; STW – Shallow Tube Well; CIS – Communal Irrigation System

Source: National Irrigation Administration, 2015





3. Rice Production, farmer and Area harvest One year, by Municipality

Municipality	Farmers (No.)	Area Harvested (ha.)	Production (MT)	Average Yield (MT/ha)
1st District				
Baco	3,610	5,054.00	18,672.39	3.67
Calapan City	6,259	16,092.00	79,873.2	4.96
Naujan	10,344	28,847.00	130,893.74	4.52
Pola	1,277	2,700.00	13,736.10	5.07
Puerto Galera	7	8.00	32.00	4.00
San Teodoro	415	721.00	2,540.47	3.55
Socorro	2,191	3,936.00	18,415.10	4.33
Victoria	4,315	10,408.50	51,800.69	4.90
2nd District				
Bansud	3,371	5,786.00	19,751.86	3.41
Bongabong	5,188	11,318.50	50,085.50	4.40
Bulalacao	1,365	1,490.00	6,700.70	4.30
Gloria	3,538	5,286.50	21,987.02	4.10
Mansalay	3,554	5,478.00	25,545.60	4.68
Pinamalayan	4,542	7,737.50	36,637.57	4.67
Roxas	2,715	5,126.00	25,568.05	5.00
Oriental Mindoro	51,908	109,989.00	502,239.92	4.60

Source: Provincial Agriculture Office, 2015



4. Corn area, Production and Average Yield by Municipality

Municipality	Area Planted (ha)	Production (MT)	Average Yield (MT/ha)
1st District			
Baco	88.0	123.2	1.4
Calapan City	59.0	112.1	1.9
Naujan	124.5	236.55	1.9
Pola	-	-	-
Puerto Galera	55.0	82.5	1.5
San Teodoro	16.5	24.75	1.5
Socorro			
Victoria	160.0	264.0	2.9
2nd District			
Bansud	209.0	606.1	2.9
Bongabong	360.0	504.0	1.4
Bulalacao	398.5	757.15	1.9
Gloria	202.4	586.96	2.9
Mansalay	50.0	95.0	1.9
Pinamalayan	25.2	73.08	2.9
Roxas	37.0	70.3	1.9
Oriental Mindoro	1,785.1	3,535.69	1.98

Source: Provincial Agriculture Office, 2015

5. Vegetable type by Area planted/harvested, Production and Average Yield

Commodity	Area Planted (ha)	Area Harvested (ha)	Production (MT)	Average Yield (MT/ha)
Root Crops	274.8	240.70	874.22	3.20
Fruit Vegetables	398.88	176.87	1,076.91	2.69
Leafy Vegetables	37.6	24.10	116.98	3.11
Legumes	74.60	32.90	68.31	0.92
Condiments	222.90	149.80	1,939.04	14.86
Total	1,008.78	624.37	4,075.46	4.04

Source: Provincial Agriculture Office, 2015



6. Coconut data by Municipality, area, farmers, barangay, trees planted and estimated Nut Products

Municipality	Coconut Area (ha)	No. of Coco Farmers	No. of Coco Barangay	No. of Trees Planted		Estimated Nut Production (wholenuts-pcs)
				Bearing	Non-Bearing	
1st District						
Baco	5,140	2,817	25	405,234	116,504	21,072,168
Calapan City	2,811	1,183	19	212,856	65,573	10,642,800
Naujan	3,780	3,803	59	323,533	94,295	17,470,782
Pola	10,024	5,439	23	811,722	207,632	46,268,154
Puerto Galera	3,515	1,311	13	266,651	85,484	13,865,852
San Teodoro	2,146	1,105	8	182,322	72,512	8,569,134
Socorro	2,662	1,425	20	280,755	34,462	14,880,015
Victoria	1,516	936	24	95,209	35,897	4,760,450
2nd District						
Bansud	1,721	656	10	109,980	27,238	5,608,980
Bongabong	7,654	2,782	28	573,138	156,505	31,522,590
Bulalacao	815	813	12	41,778	22,053	1,712,898
Gloria	4,807	3,489	26	461,396	49,468	24,915,384
Mansalay	1,050	916	14	62,869	17,259	2,640,498
Pinamalayan	5,103	4,498	27	492,305	68,616	27,569,080
Roxas	1,439	1,197	15	96,683	21,583	4,157,369
Oriental Mindoro	54,183	32,370	323	4,416,431	1,075,081	235,656,154

Source: Philippine Coconut Authority, 2015

7. High Value Commercial Crops Production (HVCC) by Farmers served, trees planted, area planted, production and average yield

Commodity	Farmers Served	No. of Trees Planted	Area Planted (ha)	Production (MT)	Average Yield (MT/ha)
Banana	No data available	5,670,636	21,423.49	400,493.10	19.11
Mango	3,748	157,438	1,603.81	63,882.63	39.83
Citrus	2,802	1,935,552	3,573.51	35,595.11	9.96
Rambutan	1,581	1,387,978	3,446.83	1,639.60	0.48
Lanzones	1,532	1,462,980	3,659.85	2,981.66	0.81
Durian	394	57,628	373.93	183.34	0.49
Papaya	25	58,333	35.00	409.15	11.69
Pineapple	21	112,700	67.62	120.25	1.78
Guyabano	12	5,000	9.70	16.12	1.66
TOTAL	10,115	10,848,245	34,193.74	514,181.00	15.04

Source: Provincial Agriculture Office, 2015





8. Top Five Fruit Production by Municipality

Municipality	Production (MT)					
	Banana	Citrus	Rambutan	Lanzones	Mango	Total
1st District						
Baco	4,335.76	545.59	88.08	0.22	66.10	5,035.75
Calapan City	6,775.45	1,281.20	19.30	4.45	17.88	8,098.28
Naujan	62,732.88	18,309.88	331.27	73.25	185.00	81,632.28
Pola	17,948.50	5,271.88	67.80	20.10	15.00	23,323.28
Puerto Galera	45.62	1,215.00	0.15		0.18	1,260.95
San Teodoro	9,356.49	135.80	19.40	2.20	11.50	9,525.39
Socorro	36,227.10	4,881.37	170.25	1,534.25	1.20	42,814.17
Victoria	9,677.23	125.88	77.29	26.59	10.50	9,917.49
2nd District						
Bansud	45,579.02	29.01	60.50	22.50	121.55	45,812.58
Bongabong	36,008.50	388.64	140.50	15.00	25.00	36,577.64
Bulalacao	85,578.67	-	-	-	63,134.13	148,712.80
Gloria	23,307.75	482.66	23.50	283.35	14.59	24,111.85
Mansalay	984.45	779.44	420.00	846.00	221.00	3,250.89
Pinamalayan	53,345.03	278.10	112.56	27.75	21.00	53,784.44
Roxas	8,590.65	1,870.66	109.00	126.00	38.00	10,734.31
Oriental Mindoro	400,493.10	35,595.11	1,639.60	2,981.66	63,882.63	504,592.10

Source: Provincial Agriculture Office, 2015



9. Livestock Population by Municipality

Municipality	Carabao	Cattle	Swine	Goat	Horse	Duck	Chicken
1st District							
Baco	857	846	4,582	1,063	12	1,079	26,338
Calapan City	1,496	2,380	12,695	1,998	28	14,616	59,017
Naujan	4,277	4,911	8,681	3,919	98	12,512	67,080
Pola	1,529	782	5,488	2,562	196	1,176	35,353
Puerto Galera	195	363	975	881	22	433	20,777
San Teodoro	932	592	6,647	2,380	9	797	18,415
Socorro	567	824	7,645	1,102	63	3,328	14,521
Victoria	1,152	749	6,701	1,002	82	4,605	21,329
2nd District							
Bansud	1,710	2,849	13,442	3,798	194	1,402	31,985
Bongabong	1,832	4,911	7,088	7,771	36	16,197	96,843
Bulalacao	1,141	2,637	4,103	5,973	16	695	18,995
Gloria	1,666	2,738	6,941	1,458	56	2,907	30,041
Mansalay	1,252	1,484	10,245	10,340	157	7,347	35,293
Pinamalayan	1,302	1,451	6,488	2,791	70	3,205	44,268
Roxas	2,044	2,041	12,164	4,243	43	10,563	44,289
Oriental Mindoro	21,952	29,558	113,885	51,281	1,082	80,862	564,544

Source: Provincial Veterinary Office, 2014

10. Fishery Area Production and Income

Indicators	Area (ha)	Production (MT)	Income (Php)
Freshwater			
* <i>Tilapia</i>	157.2612		6,000,921.00
Brackishwater	2,997.215		
* <i>Sugpo and Bangus Polyculture</i>			
Sugpo (30%)		4.3775	1,532,125.00
Bangus (70%)		253.8498	30,461,976.00
Fish cages/Fish Pen		3.4565	414,780.00
Municipal Fisheries		32,991.88	3,959,025,600.00
Commercial Fisheries		1,571.91	188,629,200.00
TOTAL		34,892.1507	4,186,064,602.00

Source: Provincial Agriculture Office, 2015

Per capita fish consumption - 36.6 kg/yr
 No. of registered fisherfolk - 14,718

B. TOURISM

1. Tourist Establishments

Municipality	No. of Establishment (Hotels/Resorts)	No. of Rooms	Bedding Capacity	Total Employment
1st District				
Baco	3	37	171	13
Calapan City	30	455	1,365	197
Naujan	10	66	375	59
Pola	7	17	54	11
Puerto Galera	161	2,705	7,166	1,449
San Teodoro	5	24	90	10
Socorro	3	26	52	6
Victoria	7	36	96	14
2nd District				
Bansud	5	47	149	18
Bongabong	9	71	240	24
Bulalacao	5	26	77	5
Gloria	8	57	238	38
Mansalay	7	27	64	12
Pinamalayan	13	123	317	47
Roxas	21	132	282	42
Oriental Mindoro	294	3,849	10,736	1,945

Source: Provincial Tourism, Investment and Enterprise Development Office, 2015

2. Tourist Attractions

- ✪ The Tamaraw
- ✪ Mount Halcon
- ✪ History and Culture
- ✪ Industrial Tourism
- ✪ Nature
- ✪ Sport and Recreational Facilities
- ✪ Health and Wellness
- ✪ Other unspecified attractions

3. Tourist Sites and Destinations by Municipality

MUNICIPALITY	TOURIST SITES AND DESTINATIONS
Puerto Galera	The Cross and Canyons (Muelle Bay) Garita or Spanish Guardhouse Excavation Museum Baclayan and Talipanan Mangyan Settlements Paradise Zoo (Herpa World) Giant Clam Garden Hibiscus Garden Municipal Forest Park Ponderosa White Sand Beaches (19 beaches) Premier Dive Sites (36 dive sites) Waterfalls (4 waterfalls) Coral Garden at Long Beach Tabinay and Villaflor Hot Springs Python Cave Puerto Galera Bay Mt. Malasimbo The Black Rice at Muelle Marble Mine
San Teodoro	Punta Baluarte Spanish Fortress Saclag Settlement Farm School Saclag Ecological Waterfalls (13 waterfalls) Agsambalilo Tabunan Hot Spring Aras Cave TagongParaiso Subuan River Saclag Hanging Bridge Punta Beach Arigoy White Water Kayaking



MUNICIPALITY	TOURIST SITES AND DESTINATIONS
Baco	Mount Halcon Rivers (4 rivers) Lantuyan and Bayanan Waterfalls Cueva Sagrada Tiboy Baras Rapids Gumahan San Andres (The Sunken Town/Old Settlement) Mangangan and Karayrayan Tunnels Nature's Park Baco Infinity Farm
Calapan City	Calapan Recreational and Zoological Park Bulusan-Suqui Eco Trail Pachoca-Balite and Lazareto, Suqui-Parang Beaches Caluangan Lake Islets (4 islets) Parang Coconut and Banana Plantations Sapul Orchard Casa Real Ruins Calapan City Hall Silonay Mangrove Conservation and Protection Area Kayak, Boardwalk Calapan Town Plaza
Naujan	Naujan Lake Pungao and Montelago Hot Springs Waterfalls (5 waterfalls) Bancuro Church Ruins Baluarte (Bell Tower) Sta. Isabel Tree Farm MILAR Aquatic Farm Bancuro Butterfly Sanctuary Naujan Town Plaza
Victoria	Tongloy Mountain Lake Fruit Orchards Philippine Tree Farm, Inc. Polester and Butterfly Farms Gipit Picnic Grove Villa Bautista Resort Triple L Resort
Socorro	Batong Dalig River La Fortuna Waterfalls Lake View Park Tree Farms Tyron Butterfly Breeding Farm Marl Insects and Butterfly Culture Branch





MUNICIPALITY	TOURIST SITES AND DESTINATIONS
Pola	Tuntong Point Waterfalls (5 waterfalls) St. John the Baptist Shrine Misong Archaeological Site Old Houses Misong Mangrove Forest Aguada Beach
Pinamalayan	Rosario Cave Cawa-cawa Cave and Marayos Waterfalls Mahabang Buhangin Banilad Bayview Mts. Dumali, Beyer and Worcester Bongol Point Pili-Banilad-Ranzo Reefs Pinamalayan Theme Park Mangyan Shooting Range Rainbow Junction Parola at Pinamalayan Bay Magdalena Beach Resort Bulaklak Garden Resort Ranzo Stairway to Heaven Pinamalayan Airport Banilad Archaeological Site Tau Buhid Mangyan Settlement Ranzo Lighthouse
Gloria	Walang Langit Waterfalls Bulaklakan Tree Farm Mount Manguyang Camping Site
Bansud	Rosacara River Waterfalls (4 waterfalls) Bansud Museum Mangyan Settlements Bansud Municipal Park and Plaza
Bongabong	Caves (3 caves) Waterfalls (7 waterfalls) 17 th Century Kuta Shrine Ancestral House of Vicente Ilagan Batangan Mangyan Community Botanical Park





MUNICIPALITY	TOURIST SITES AND DESTINATIONS
Roxas	San Rafael Cave Tauga Diit River Happy Valley Mountain View Fish Sanctuary San Vicente Eco-Forest
Mansalay	Matang Pugita and Lamak River/Waterfalls Palaypay Burial Ground and Palaypay Diit River Lanao Sigong River Mansalay Bay Bugtong Bato Point Mangyan Virgin Cave Acacia Park and Mountain View Palace Buktot and Kasabangan White Sand Beaches Bait Mangyan Village in Brgy. Panaytayan Burial Cave in Balanga Mangyan Culture (settlement) Municipal Museum Wasig Airport Turtle Sanctuary Mansalay Eco Park Mansalay Municipal Port
Bulalacao	White sand islets and reefs (7 islands, 5 islets) Cabugao Waterfalls Bagong Sikat Falls Panangiran Peak Buyayao Peak Mt. Namalayan Colon Hill Lubok Sunken 17 th Century Sunken Church

Source: Provincial Tourism, Investment and Enterprise Development Office, 2015



4. Festivities by City/Municipality

Municipality	Foundation Day	Date of Fiesta	Festival	
			Name	Date
Baco	January 25	March 19	Banana	January 25
Bansud	July 4	January 17-19	Basudani	January 19
Bongabong	December 7	March 19	Sulyog	March 19
Bulalacao	February 15	June 29	Biniray	June 29
Calapan City	March 21	January 1	Harvest/Kalap Festival	March 21
Gloria	October 1	February 14-15	Kawayanan	Sept. 29 – Oct. 1
Mansalay	July 24	November 25	Mansalenses Palakaya	July 24
Naujan	January 4	September 10	DaBaLiSiHit	September 10
			Bibingka	May 24
Pinamalayan	April 25	April 25	Bahaghari	April 25
			Bahaghari Centurion	Every Holy Week
Pola	January 1	June 24	Sab'uyan & Bankathon	June 24
			Pola Moriones	April
Puerto Galera	March 18	December 8	Kaaldawan Iraya	October 12
			De Galera	May 10-12
Roxas	November 15	January 25	Sipag	July 28
San Teodoro	February 16	December 8	Adyawan Festival	December 8
Socorro	July 26-27	July 26-27	Pakapya Agtike	July 26
Victoria	September 18	October 14-15	Kapakyanan	September 18

Source: Provincial Tourism, Investment and Enterprise Development Office, 2015

C. COMMERCE AND INDUSTRY

1. Business Establishments by Type, Investments & Employment

Sectoral Classification	No. of Applications	Investments (PhP)	Employment
Agriculture	272	42.356	579
Manufacturing	65	242.000	185
Services	526	133.961	1,215
Tourism	43	42.858	117
Trading	554	58.677	1,188
Total	1,460	519.852	3,284

Source: Department of Trade and Industry, 2015



2. Automated Teller Machines (Calapan City):

- | | |
|---|---|
| <ul style="list-style-type: none"> a. Land Bank of the Philippines (LBP) b. Development Bank of the Philippines (DBP) c. Philippine National Bank (PNB) d. United Coconut Planters Bank (UCPB) e. First Allied Bank f. MetroBank (2) g. Bank of the Philippine Islands (BPI) -2 h. China Banking Corp. i. Banco de Oro (BDO) - 2 j. Bank of Commerce k. Rizal Commercial Banking Corporation (RCBC) | <ul style="list-style-type: none"> l. Max Bank m. East West Banking Corp. n. Security Bank o. May Bank p. CARD Bank q. First Consolidated Bank r. Robinson's Bank Corp. s. City Savings t. PS Bank u. Agri Business Rural Bank v. Asia United Bank w. Makati Bank |
|---|---|

3. Number of Banks by City/Municipality

Municipality	Banks
Baco	1
Bansud	2
Bongabong	3
Bulalacao	-
Calapan City	37
Gloria	4
Mansalay	1
Naujan	3
Pinamalayan	12
Pola	1
Puerto Galera	3
Roxas	5
San Teodoro	1
Socorro	3
Victoria	2
TOTAL	78





INFRASTRUCTURE AND UTILITIES

A. TRANSPORTATION

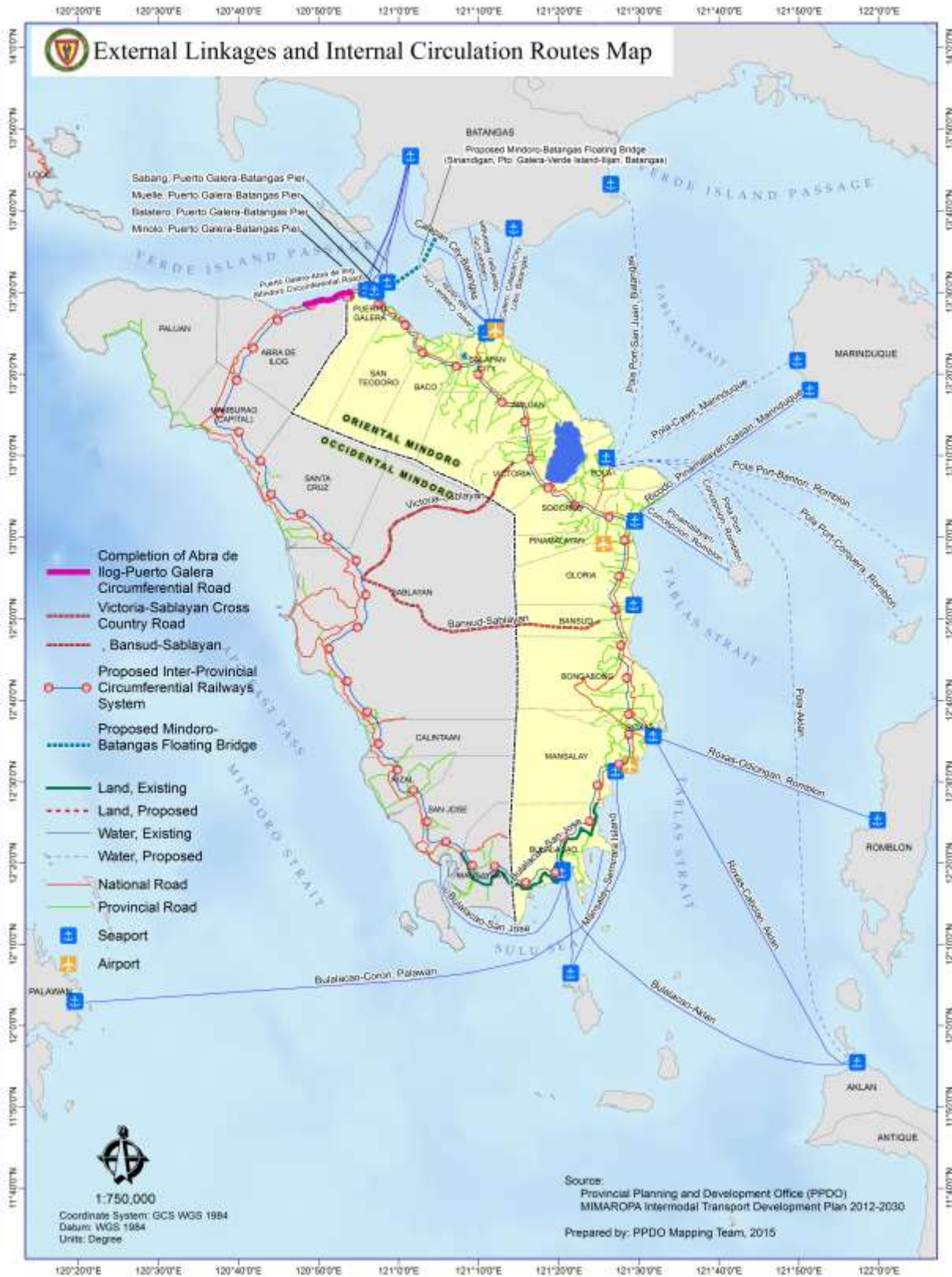
Facilities	Number
1. Roads (as of 2014)	
a. National Roads (KM)	
▪ Concrete – 257.487kms; Gravel – 0.615kms; Asphalt – 69.299kms	328.097
b. Provincial Roads (KM)	
▪ Concrete – 384.4380kms; Gravel – 498.3961kms; Earth – 14.431km; Asphalt – 0.020km	897.285
2. Bridges (number)	
a. National	94
b. Provincial	101
3. Land Transportation	
a. Registered vehicles	30,485
b. License issued	31,757
c. Total collection from fines on law enforcement (PhP)	2,537,290.00
4. Airports	
a. Existing airports (Calapan, Pinamalayan, Wasig)	3
b. Aircraft movements	
▪ Private/commercial aircraft landed (Calapan)	40
▪ Government including military craft	2
5. Sea Ports	
a. National ports (Calapan, Roxas)	2
b. Municipal ports(2 in Puerto Galera; 1 each in Calapan, Pinamalayan, Mansalay, Bulalacao, Bansud and Pola)	8
6. RO-RO vessels	39
7. Fast craft	6
8. Shipping company	8
9. Ship calls (Calapan and Roxas)	20,302
10. Passengers (Calapan and Roxas)	
a. Disembarked	2,956,087
b. Embarked	2,731,638
11. Cargo (MT)-Calapan and Roxas	
a. Inbound	26,321
b. Outbound	16,180
12. Rolling Cargo (in units)	476,005
a. Inbound	238,741
b. Outbound	237,264

Source: Land Transportation Office, Philippine Ports Authority, Civil Aviation Authority, Provincial Engineering Office, Department of Public Works and Highways, 2015





External Linkages and Internal Circulation Routes Map



Source: Provincial Planning and Development Office, 2015





B. COMMUNICATION

1. Newspapers (*Coverage-Or. Mindoro and Southern Tagalog*)

- | | |
|--------------------|----------------------------|
| a. Island Sentinel | e. Mindoro Bulletin |
| b. Island Profiles | f. Mindoro Weekly Reporter |
| c. Island Observer | g. People's Tribune |
| d. Halcon Star | |

2. Post Office 12

3. Telegraphic Services

- | | |
|-------------------------------------|----|
| a. Telegraphic transfer office | 4 |
| b. Office handling social telegraph | 10 |

4. Wireless Service Providers, 2015

Municipality	No. of cellsites		
	Smart Communications	Globe Telecom	Digitel (SunCellular)
Baco	1		1
Bansud	2		
Bongabong	1		
Bulalacao	1		
Calapan City	9	8	1
Gloria	2	2	
Mansalay	1		
Naujan	5	1	1
Pinamalayan	4		1
Pola	1		
Puerto Galera	3	2	
Roxas	2	1	
San Teodoro	1		
Socorro	2		
Victoria	2	2	1
TOTAL	37	16	5





5. Telephone Companies (landline)

- a. Calapan Telephone System, Inc. - *Calapan City, Puerto Galera, Victoria, Socorro, Pinamalayan, Bongabong, Roxas, Gloria, Bansud*
- b. Globe Telecom - *Calapan City, Puerto Galera, Naujan, Victoria, Socorro, Pinamalayan, Bongabong, Roxas*
- c. RMC Telecommunication Company - *Naujan, Oriental Mindoro*

6. Internet Service Providers

- a. Calapan Telephone System, Inc. (CATSI) - *Calapan City, Pinamalayan, Bongabong*
- b. Dalcan Technologies - *Calapan City, Puerto Galera*
- c. Smart Communications - *Provincewide*
- d. Globe Telecom - *Calapan City, Puerto Galera, Naujan, Victoria, Pinamalayan*
- e. Tamaraw Vision Net, Inc. - *Calapan City*

7. Radio Stations and Cable TV Networks by Municipality

Municipality	FM Radio Station	Cable Television Network	City/ Municipality	FM Radio Station	Cable Television Network
1st District			2nd District		
Baco		1	Pinamalayan	1	2
San Teodoro		1	Gloria		1
Puerto Galera		1	Bansud		1
Calapan City *	4	2	Bongabong	1	1
Naujan	1	1	Roxas	1	1
Victoria	1	1	Mansalay		1
Socorro		2	Bulalacao		1
Pola		1			
Oriental Mindoro	6	10	Total	3	8

** with 1 AM Radio Station - DWOM 9.36kHz*



8. Ratio of postal employees to total population

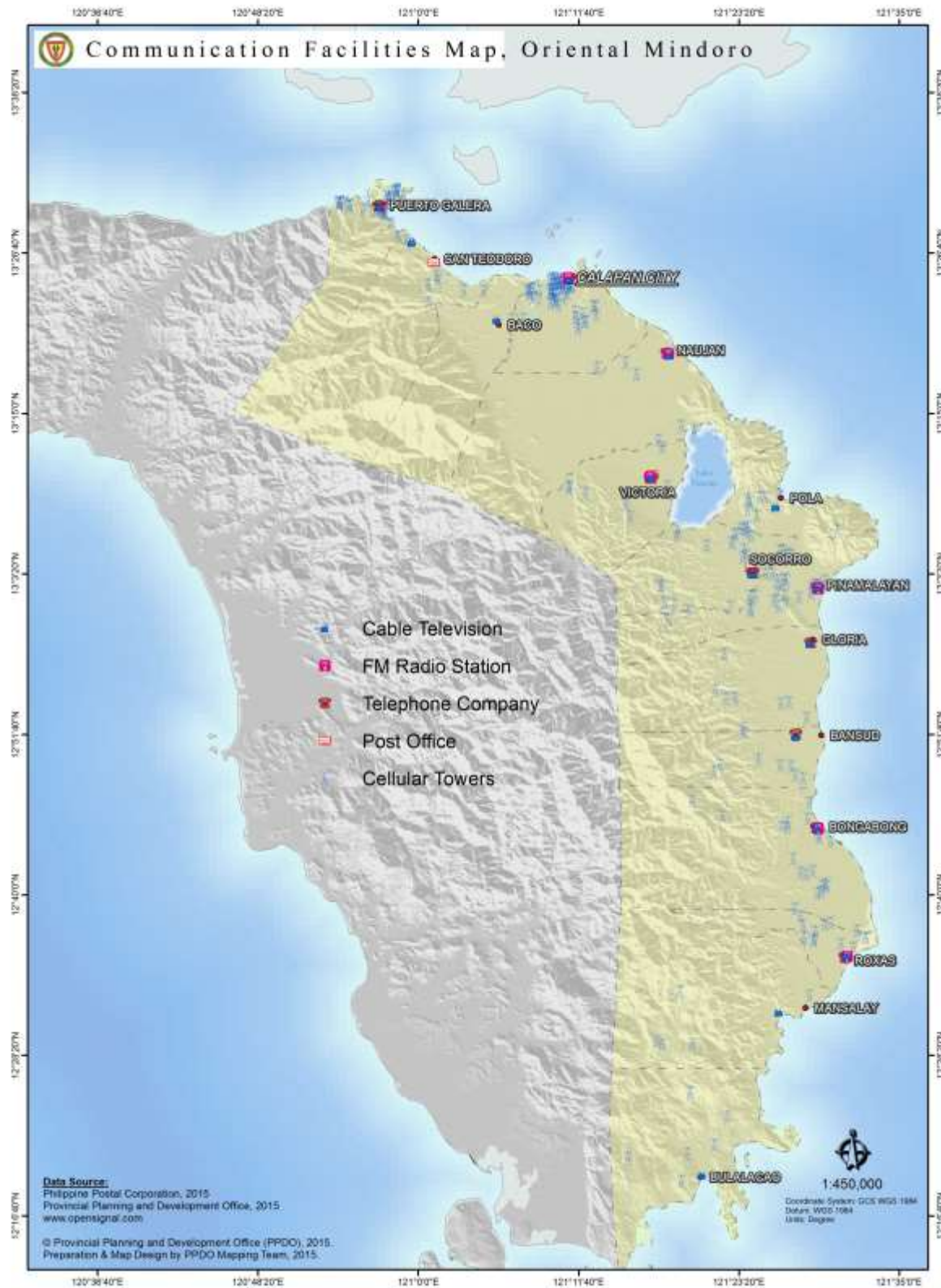
Municipality	Projected No. of HH 2015	No. of Postal Employees	Ratio
1st District			
Baco	37,788	2*	1:18,894
Calapan City	134,430	12	1:11,202
Naujan	100,305	1	1:100305
Pola	33,515		
Puerto Galera	39,605	2	1:19,802
San Teodoro	16,915	1	1:16,915
Socorro	38,946	1	1:38,946
Victoria	51,277	1	1:51,277
2nd District			
Bansud	40,118	1	1:40,118
Bongabong	70,416	1	1:70,416
Bulalacao	37,267		
Gloria	43,785	1*	1:43,785
Mansalay	59,505	1	1:59,505
Pinamalayan	86,368	4	1:21,592
Roxas	54,800	3	1:18,266
Oriental Mindoro	843,402	31	1:27206

Source: Philippine Postal Corporation, 2015

*Municipal paid employee



Communication Facilities Map, Oriental Mindoro



Source: Provincial Planning and Development Office, 2015





C. WATER

A. Level III Water System by City/Municipality

City/ Municipality	Water Service Provider	Type of Water Facility
Calapan City	Calapan Waterworks System and Dev't Corporation	Pump
Baco	Pag-asa Water System Bangkatan Water System Dulangan III Water System San Ignacio Water System Barangay Water Water System	Gravity-fed Gravity-fed Gravity-fed Gravity-fed Gravity-fed
Bongabong	Bongabong Municipal Waterworks System Formon Water System Poblacion Water System Labasan Water System Carmundo Water System Hagan Water System Libertad Water System Malitbog Water System	Pumped Pumped Pumped Gravity-fed Pumped Pumped Pumped Pumped
San Teodoro	San Teodoro Water District Bigaan Water System Calsapa Water System Caagutayan Water System Calangatan Water System Tacligan Water System	Gravity-fed Pumped Pumped Pumped Pumped Pumped
Gloria	Tambong Water System Malamig Water System	Pumped Pumped
Mansalay	Mansalay Waterworks System	Pumped
Naujan	Naujan Water District Dao Waterworks Association Melgar A Waterworks Association Melgar B Waterworks Poblacion I Water System Apitong Water System Barcenaga Water System Sampaguita Water System Pagkakaisa Water System So. Centro, Montelago Water System So. Balangibang, Montelago Water System	Pumped Pumped Pumped/Gravity-fed Pumped/Gravity-fed Gravity-fed Pumped Pumped Pumped Pumped Gravity-fed Gravity-fed
Pinamalayan	Pinamalayan Water District	Pumped





City/ Municipality	Water Service Provider	Type of Water Facility
Pola	Pola Water District So. Centro, Panikihan Water Supply System So. Parangan, Panikihan Water Supply System So. Palmera 1, Malibago Water System Association So. Palmera 2, Malibago Water System Association Tiguihan 1 Water Users Association Tiguihan 2 Water Users Association Bacawan 1 Water System Association Bacawan 2 Water System Association Campamento 1 Water System Association Campamento 2 Water System Association Tagumpay Water System Association	Pumped Pumped Gravity-fed Pumped Pumped Gravity-fed Gravity-fed Gravity-fed Gravity-fed Gravity-fed Gravity-fed Gravity-fed Gravity-fed Gravity-fed Gravity-fed Gravity-fed Gravity-fed Gravity-fed
Puerto Galera	Puerto Galera Water Works Office Dulangan Water System Aninuan Water System	Gravity-fed Gravity-fed Gravity-fed
Roxas	Roxas Water District Cantil Water System	Pumped Pumped
Socorro	Socorro Waterworks System Administrations	Pumped
Victoria	San Gabriel Water System Bagong Silang Water System	Pumped Pumped

Source: Provincial Planning and Development Office, 2014



B. Population by Type of Water Facility and Urbanity

Type of Water Facility	Total	Urban	Rural
Community Water System - Owned	84,680	20,486	64,194
Community Water System – Shared	96,117	10,476	85,641
Deep well – owned	57,240	10,499	46,741
Deep well – shared	120,095	17,898	102,197
Artesian well – owned	52,150	5,560	46,590
Artesian well – shared	86,165	7,057	79,108
Dug/shallow well – owned	18,951	525	18,426
Dug /shallow well – shared	32,196	1,143	31,053
River, stream, lake, spring bodies of water	61,264	2,007	59,257
Bottled Water	4,792	1,883	2,909
Tanker Truck/Peddler	59,111	21,620	37,491
Other	3,433	356	3,077
Total	676,194	99,510	576,684

Source: Community Based Monitoring System Survey, 2008

C. Potential Water Sources

- Surface Waters (rivers, streams, lakes) are available in the main rivers of Oriental Mindoro and in Naujan Lake.
- Groundwater

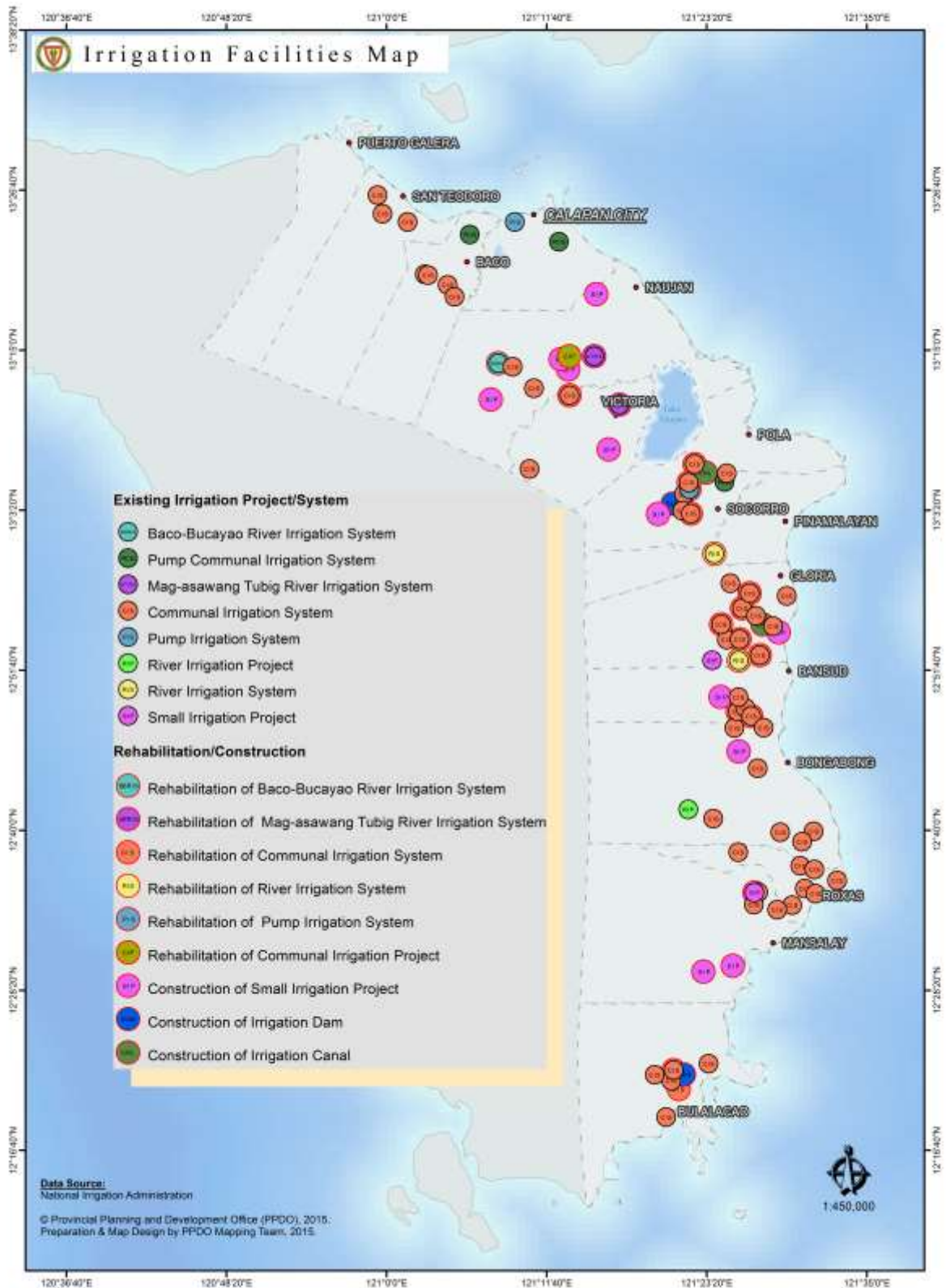
D. Major Watersheds, Oriental Mindoro: 2015

Name of Watershed	Location	Classification	Area (sq km)	Remarks
Bongabong Watershed	Bongabong, Bansud, Mansalay, Roxas	WMUL/Rehab Project	1,099.86	
Mayabig Community Watershed	Bayanan, Baco	Community	6.10	Proposed for Proclamation
Sabang Community Watershed	Sabang, Pinamalayan	Community	11.74	Proposed for Proclamation
Lancawan Community Watershed	Conrazon, Bansud	Community	9.37	Proposed for Proclamation
Baco-Bucayao Watershed	Baco, San Teodoro	Proposed	554.00	Proposed for watershed rehabilitation project
Mag-Asawang Tubig Watershed	Victoria	Proposed	125.33	Proposed for watershed rehabilitation project
Pola Watershed	Socorro	Proposed	125.73	Proposed for watershed rehabilitation project
Total Area (sq. km)			1,932.13	

Source: Department of Environment and Natural Resources – Environmental Management Bureau



Irrigation Facilities Map

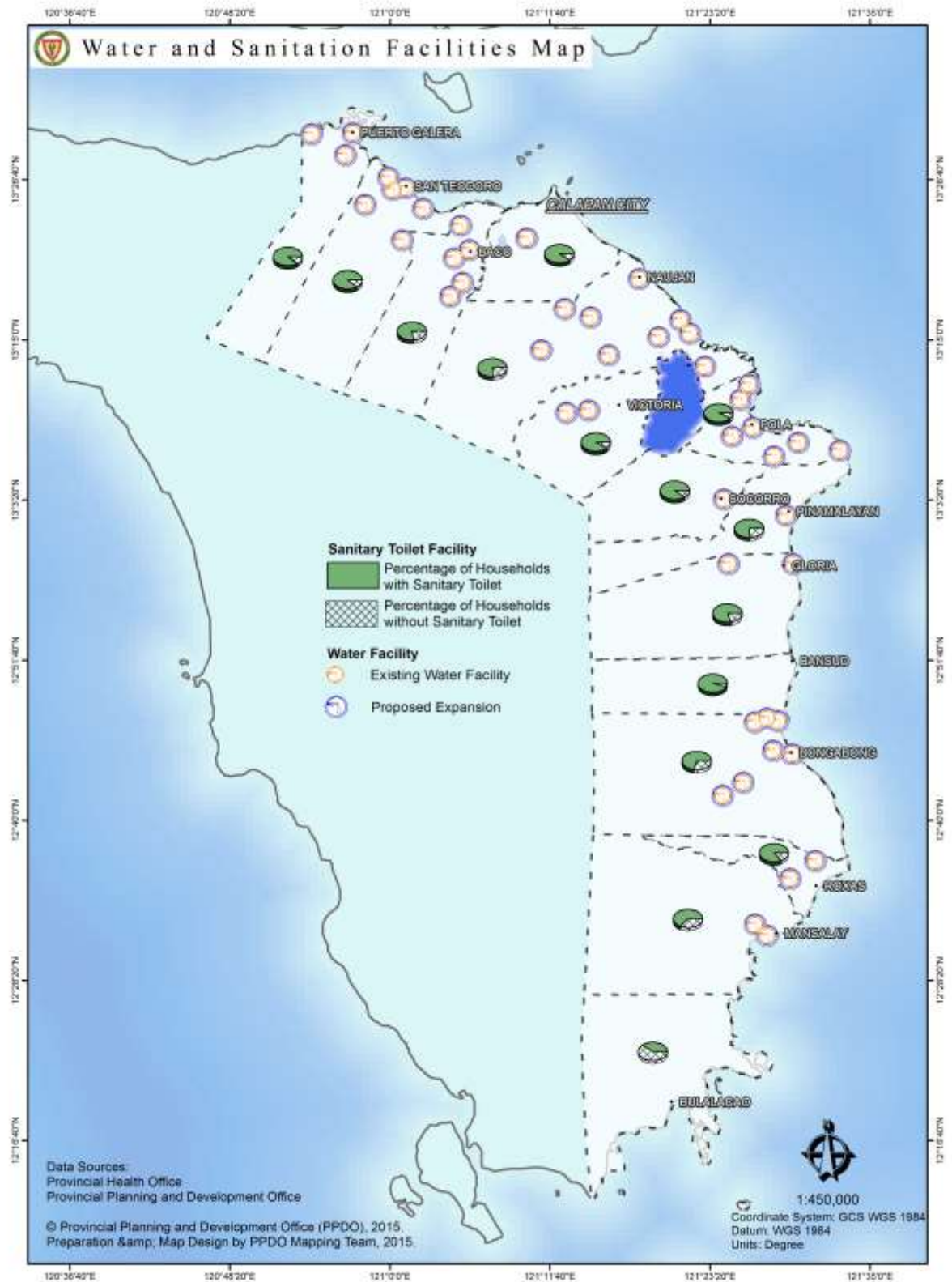


Source: Provincial Planning and Development Office, 2015





Water and Sanitation Facilities Map



Source: Provincial Planning and Development Office, 2015



D. POWER

1. Status of Electrification

Municipality	Barangays			House Connections	Members Approved
	Covered	Energized	%		
1st District					
Baco	27	27	100	7,548	5,766
Calapan City	62	62	100	42,475	28,103
Naujan	70	70	100	22,988	19,239
Pola	23	23	100	7,266	7,038
Puerto Galera	13	13	100	9,606	5,109
San Teodoro	8	8	100	3,827	2,498
Socorro	26	26	100	9,008	7,078
Victoria	32	32	100	11,912	9,069
2nd District					
Bansud	13	13	100	8,106	6,745
Bongabong	36	36	100	14,077	11,152
Bulalacao	15	15	100	4,408	3,945
Gloria	27	27	100	9,208	6,999
Mansalay	17	17	100	6,451	5,965
Pinamalayan	37	37	100	19,646	13,947
Roxas	20	20	100	10,899	8,809
Oriental Mindoro	426	426	100	187,425	141,462

Source: National Power Corporation, 2015

2. Total Dependable Capacity - 48.7 MW
3. Maximum Power Demand - 45.2 MW



4. Present Sources of Power

Power Plant	Installed Capacity (MW)	Dependable Capacity (MW)	Location
1. Power One Corp.	14.0	9.0	Sta. Isabel, Calapan City
2. Global Business Holdings, Inc.	7.5	5.0	Papandayan, Pinamalayan
3. Ormin Power, Inc.	8.2	6.4	Sta. Isabel, Calapan City
4. Mindoro Grid Corp. (Bansud)	6.6	5.0	Conrazon, Bansud
5. Mindoro Grid Corp. (Bongabong)	6.6	5.0	Labasan, Bongabong
6. Linao Cawayan Mini Hydro (Lower)	2.1	1.2	Calangatan, San Teodoro
7. Linao Cawayan Mini Hydro (Upper)	3.0	2.1	Caagutayan, San Teodoro
8. DMCI Power Corp.	15.0	15.0	Sta. Isabel, Calapan City

E. Power Substations

Power Substations [ORMECO]	MVA RATING	Ownership
Calapan City	30	National Power Corporation
Pinamalayan	5	Oriental Mindoro Electric Cooperative
Naujan	5	Oriental Mindoro Electric Cooperative
Roxas	5	Oriental Mindoro Electric Cooperative
Socorro-Pola	5	Oriental Mindoro Electric Cooperative
Puerto Galera	10	Oriental Mindoro Electric Cooperative
Bongabong	5	Oriental Mindoro Electric Cooperative
Victoria	2.5	Oriental Mindoro Electric Cooperative

6. Breakdown of actual connections

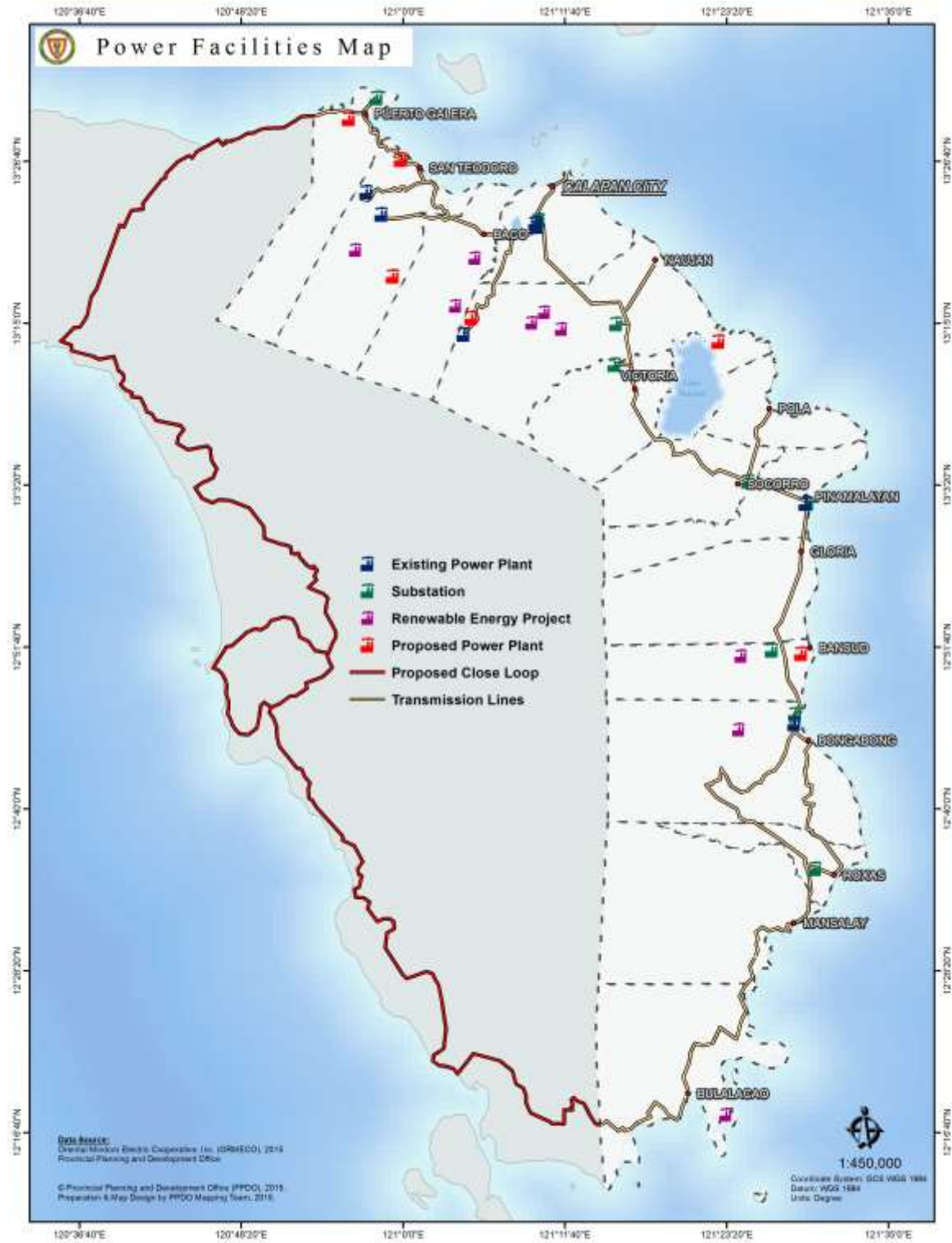
a. Commercial	-	9,365
b. Residential	-	133,845
c. Industrial	-	139
d. Public Buildings	-	3,327
e. Street Lights	-	652
f. BAPA	-	3,912
TOTAL		151,240

Source: Oriental Mindoro Electric Cooperative, Inc., 2015





Power Facilities Map



Source: Provincial Planning and Development Office, 2015



Social Development Profile

A. LABOR AND EMPLOYMENT

1. Comparative Labor Force Participation Rates, Employment and Unemployment Rates, MIMAROPA

Labor and Employment	2013	2014	Oct 2015
Labor Force Participation Rate	66.3	67.2	65.5
Employment Rate	95.9	95.4	97.4
Unemployment Rate	4.1	4.6	2.6
Underemployment Rate	23.4	20.4	18.7

2. Comparative Employment Status of Household Population 15 years old and over, MIMAROPA (in thousands)

Labor and Employment	2013	2014	Oct 2015
Total in the labor force	1,294	1,342	2,062
Total Employed	1,241	1,280	2,008
Total Unemployed	53	62	54

Note: Details may not add up to total due to rounding

Source: <http://bles.dole.gov.ph/PUBLICATIONS>

B. POVERTY AND INCOME

1. Annual per Capita Poverty Threshold, Poverty Incidence, Magnitude of Poor Families and Population by Province, MIMAROPA

Region/ Province	Annual Per Capita Poverty Threshold (in Pesos)			Poverty Incidence among Families (%)			Magnitude of Poor Families Estimate		
	2006	2009	2012	2006	2009	2012	2006	2009	2012
PHILIPPINES	13,357	16,871	18,935	21	20.5	19.7	3,809,283	4,036,915	4,214,921
MIMAROPA	12,645	15,613	17,292	32.4	27.2	23.6	176,282	160,226	150,486
Marinduque	12,909	15,678	17,180	31.9	27.4	23.9	15,481	13,971	12,743
Occidental Mindoro	12,725	15,937	17,412	33.5	25	29.8	30,084	24,203	31,070
Oriental Mindoro	13,396	16,710	17,415	35.7	28.8	21.5	56,043	48,741	39,272
Palawan	11,521	14,418	16,696	28.2	25.3	20.5	53,193	53,131	47,730
Romblon	12,811	15,547	18,464	36.3	32.6	30.4	21,481	20,181	19,671

Source: Philippine Statistics Authority, 2013



2. Annual per Capita Food Threshold, Subsistence Incidence, Magnitude of Poor Families and Population by Province, MIMAROPA – 2012

Region/Province	Annual Per Capita Food Threshold (PhP)	Subsistence Incidence (%)	
		Families	Population
MIMAROPA	12,082	16.8	15.8
Occidental Mindoro*	12,103	31.9	32.2
Oriental Mindoro	12,192	26.1	24.0
Marinduque	11,997	31.3	29.1
Romblon	12,893	27.6	27.8
Palawan*	11,697	41.6	36.2

Source: Philippine Statistics Authority, 2012

*Coefficient of Variation (CV) of 2012 poverty incidence among families is greater than 20%

3. Average Family Income , Expenditures and Savings of Families, MIMAROPA: 2012

Income	-	PhP177,000
Expenditures	-	134,000
Savings	-	43,000

Source: Philippine Statistics Authority, 2012 Family Income and Expenditure Survey



4. The 13+1 Dimensions of Poverty, Oriental Mindoro, 2008

Indicator	Households		Population					
	Magnitude	Proportion	Magnitude			Proportion		
			Total	Male	Female	Total	Male	Female
DEMOGRAPHY								
Population	153999		675838	343995	331843	100	50.9	49.1
Average household size	4							
Children 0-5 years old	68887	44.7	102321	52580	49741	15.1	15.3	15.0
Children 6-12 years old	73955	48	127242	65217	62025	18.8	19.0	18.7
Members 13-16 years old	50518	32.8	68955	35821	33134	10.2	10.4	10.0
Members 6-16 years old	90952	59.1	196197	101038	95159	29.0	29.4	28.7
Members 10 years old and above	153885	99.9	501153	254460	246693	74.2	74.0	74.3
Members of the labor force	136651	88.7	204053	142060	61993	30.2	41.3	18.7
HEALTH AND NUTRITION								
children 0-5 year old who died	534	0.8	559	294	265	0.5	0.6	0.5
women who died due to pregnancy related-causes	38	0.2	39			0.2		
malnourished children 0-5 year old	5435	7.9	7032	3591	3441	6.9	6.8	6.9
HOUSING								
households living in makeshift housing	6504	4.2	28470	14882	13588	4.2	4.3	4.1
households who are squatters	4577	3	20176	10403	9773	3.0	3.0	2.9
WATER AND SANITATION								
households without access to safe water	39956	25.9	175117	89298	85819	25.9	26.0	25.9
households without access to sanitary toilet facility	35181	22.8	155752	81235	74517	23.0	23.6	22.5
BASIC EDUCATION								
children 6-12 years old not attending elementary	25001	33.8	29762	15727	14035	29.5	8.0	14.7
children 13-16 years old not attending high school	22411	44.4	26844	15766	11078	38.9	44.0	33.4
children 6-16 years old not attending school	21416	23.5	29287	17127	12160	14.9	17.0	12.8
INCOME AND LIVELIHOOD								
households with income below poverty threshold	95163	61.8	460250	237061	223189	68.1	68.9	67.3
households with income below food threshold	71700	46.6	358982	185356	173626	53.1	53.9	52.3
households experienced food shortage	13321	8.7	64750	33638	31112	9.6	9.8	9.4
Unemployed members of the labor force	3326	2.4	3869	2289	1580	1.9	1.6	2.5
PEACE AND ORDER								
Victims of crime	2149	1.4	4507	2583	1924	0.7	0.8	0.6

Source: CBMS Survey, 2008

5. Municipal level small area estimates of poverty incidence, 2009 and 2012

Municipality	Poverty Incidence	
	2009	2012
1st District		
Baco	44.5	22.8
Calapan City	23.0	7.1
Naujan	38.4	20.5
Pola	37.9	29.2
Puerto Galera	23.9	11.0
San Teodoro	33.6	14.8
Socorro	36.8	15.4
Victoria	35.2	18.0
2nd District		
Bansud	39.0	19.9
Bongabong	35.8	25.1
Bulalacao	51.5	40.0
Gloria	35.5	18.3
Mansalay	41.8	35.5
Pinamalayan	31.7	17.0
Roxas	29.7	21.1

Source: Philippine Statistics Authority–World Bank Estimation of Local Poverty in the Philippines

C. HEALTH

1. Number and Rate of Births, Total Deaths, Infant and Maternal Deaths

INDICATORS	2013		2014		2015	
	No.	Rate	No.	Rate	No.	Rate
Births	17,042	20.7	16,685	20.0	17,312	20.5
Total Deaths	2,892	3.5	2,696	3.2	3,063	3.6
Infant Deaths	121	7.1	99	5.9	77	4.4
Maternal Deaths	4	0.23	4	0.23	1	0.06

Source: Annual 2015 Field Health Service Information System

2. Access to Health Services

INDICATORS	2013	2014	2015
Proportion of births attended by skilled health personnel			
a. MD/PHN/Midwives	78.92	80.00	84.48
b. Hilot/Trained Birth Attendants	19.97	18.00	14.97
c. Others /Skilled Birth Attendant	1.14	1.00	1.03

Source: Provincial Health Office, 2015

3. **Morbidity: Leading Causes, Number and Rate per 100,000 Population Five Year Average (2011-2014), 2015**

CAUSES	2015		5 Yr. Average	
	No.	Ratio	No.	Ratio
1. Acute Upper Respiratory Infection	28,216	3350	25,004	2969
2. Pneumonia	3,905	464	2,804	333
3. Hypertension	3,520	418	2,740	325
4. Urinary Tract Infection	2,601	309	1,975	235
5. Wound All Forms	2,418	287	1,648	196
6. Skin Disease	2,091	248	1,265	150
7. Bronchitis	1,546	184	1,625	193
8. Acute Gastroenteritis	1,528	181	2,499	297
9. Chronic Obstructive Pulmonary Disease	1,356	161	69	8
10. Pulmonary Tuberculosis	1,089	129	1,774	211

Source: Provincial Health Office, 2015

4. **Infant Morbidity: Leading Causes, Number and Rate per 100,000 Population Five Year Average (2011-2014), 2015**

CAUSES	2015		5 Yr. Average	
	No.	Ratio	No.	Ratio
1. Acute Upper Respiratory Infection	2,656	315.37	2,510	298.03
2. Pneumonia	312	37.05	556	66.02
3. Bronchitis	228	27.07	461	54.74
4. Rhinitis	221	26.24	158	18.76
5. Acute Viral Infection	186	22.09	25	2.97
6. Skin Diseases	185	21.97	140	16.62
7. Diarrhea	181	21.49	272	32.30
8. Asthma	55	6.53	100	11.87
9. Otitis Media	21	2.49	11	1.31
10. Oral Thrush	8	0.95	26	3.09

Source: Provincial Health Office, 2015 Annual Report

5. Mortality: Leading Causes, Number and Rate per 100,000 Population Five Year Average (2011-2014), 2015

CAUSES	2015		5 Yr. Average	
	No.	Ratio	No.	Ratio
1. Heart Disease	530	63	667	79
2. Pneumonia	293	35	257	31
3. Cancer All Forms	261	31	220	26
4. Old Age	209	25	215	26
5. Hypertension	125	15	121	14
6. Septicemia	120	14	15	2
7. Pulmonary Tuberculosis	110	13	141	17
8. Renal Failure	88	10	34	4
9. Chronic Obstructive Pulmonary Disease	84	10	109	13
10. Diabetes	83	10	66	8

Source: Provincial Health Office, 2015 Annual Report

5. Infant Mortality per 100,000 Population Five Year Average (2011-2014), 2015

CAUSES	2015		5 Yr. Average	
	No.	Rate	No.	Rate
1. Sepsis	19	1.10	15	0.87
2. Pneumonia	14	0.81	21	1.21
3. Heart Disease	5	0.29	9	0.52
4. Prematurity	4	0.23	20	1.16
5. Congenital Metabolic Disorder	4	0.23	5	0.29
6. Cardio Respiratory Failure	4	0.23	8	0.46
7. Acute Respiratory Disease Syn.	3	0.17	3	0.17
8. Meningitis	1	0.06	4	0.23
9. Aspiration	1	0.06	3	0.17
10. Intestinal Obstruction	1	0.06	1	0.06

Source: Provincial Health Office, 2015 Annual Report



Source: Provincial Planning and Development Office, 2015



7. Nutritional Status

Age Group (months)	Number of Preschoolers Weighed by Nutritional Status and Sex											
	Normal			Underweight			Severely Underweight			Overweight		
	Boys	Girls	Total	Boys	Girls	Total	Boys	Girls	Total	Boys	Girls	Total
0-5	4,007	4,006	8,013	109	79	188	65	39	104	63	45	108
6-11	4,198	4,165	8,363	170	132	302	65	35	100	22	43	65
12-23	8,363	7,999	16,362	578	459	1,037	186	143	329	77	66	143
24-35	8,612	8,196	16,808	766	666	1,432	209	208	417	82	70	152
36-47	8,688	8,094	16,782	772	747	1,519	177	201	378	111	89	200
48-59	9,084	8,409	17,493	796	778	1,574	201	182	383	102	79	181
60-71	8,055	7,781	15,836	760	717	1,477	196	157	353	104	61	165
Total	51,007	48,639	99,646	3,578	1,099	4,677	1,099	965	2,064	561	453	1,014
Percentage Weighed (%)			90.68			6.55			1.85			0.92

Source: Provincial Health Office, 2015 Annual Report

8. Health Facilities and Personnel

Facilities	Number	Practitioners (government)	Number
Private Hospitals	12	Physicians	25
Government Owned Hospitals	6	Nurses	44
Private Clinics	46	Nutritionist	1
Rural Health Units	17	Medical Technologist	11
City Health Office	1	Dental Aides	-
Barangay Health Station	232	Non-Technical	34
Malaria Control Service	1	Dentists	15
Schistosomiasis Control Team Office	1	Midwives	138
Botika sa Barangay	356	Engineers/Sanitary Inspectors	21
Botika ng Lalawigan	1	Active BHWs	3,972
Botika ng Bayan	1		

Source: Provincial Health Office, 2015 Annual Report

D. EDUCATION

1. Facilities (SY2015-2016)

Facilities	Province	Calapan City
Educational Districts	18	3
Public Pre- Elementary Schools	418	49
Public Elementary Schools	421	49
National High Schools	82	9
Private Pre-Elementary Schools	39	14
Private Elementary Schools	47	16
Private Secondary Schools	37	6
Government Owned Tertiary (Vocational/Technical and Colleges)	2	NA

Source: Department of Education (Provincial & City Division)

2. Enrollment in Government and Private Schools By Level of Education (Provincial and City)

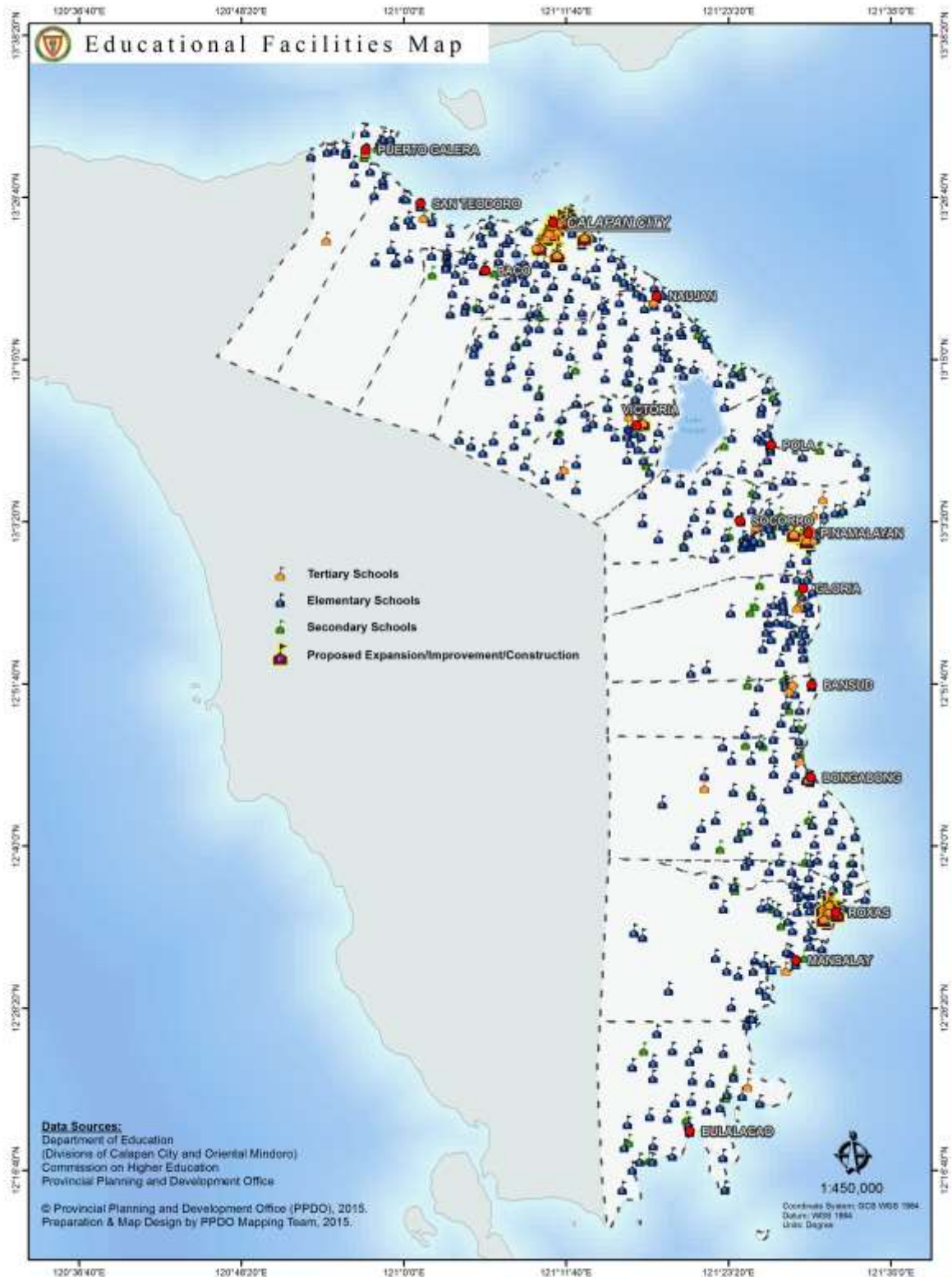
Educational Level	2015-2016	
	Public	Private
Pre-Elementary	18,932	1,288
Elementary	123,548	5,796
Secondary	55,136	14,988

Source: Department of Education (Provincial & City Division)

3. Performance Indicators in Public Elementary and Secondary Schools, 2014-2015

Performance Indicators	Province		Calapan City	
	Public Elementary Schools	Public Secondary Schools	Public Elementary Schools	Public Secondary Schools
Net Enrolment Rate	90.42	62.15	98.25	82.18
Cohort Survival Rate	86.46	Data not yet available	96.74	86.40
School Leavers Rate	5.31	8.11	1.15	4.71
Graduation Rate	Data not yet available	Data not yet available	100.34	98.86
Completion Rate	79.37	84.44	93.28	84.46

Source: Department of Education (Provincial & City Division)



Source: Provincial Planning and Development Office, 2015



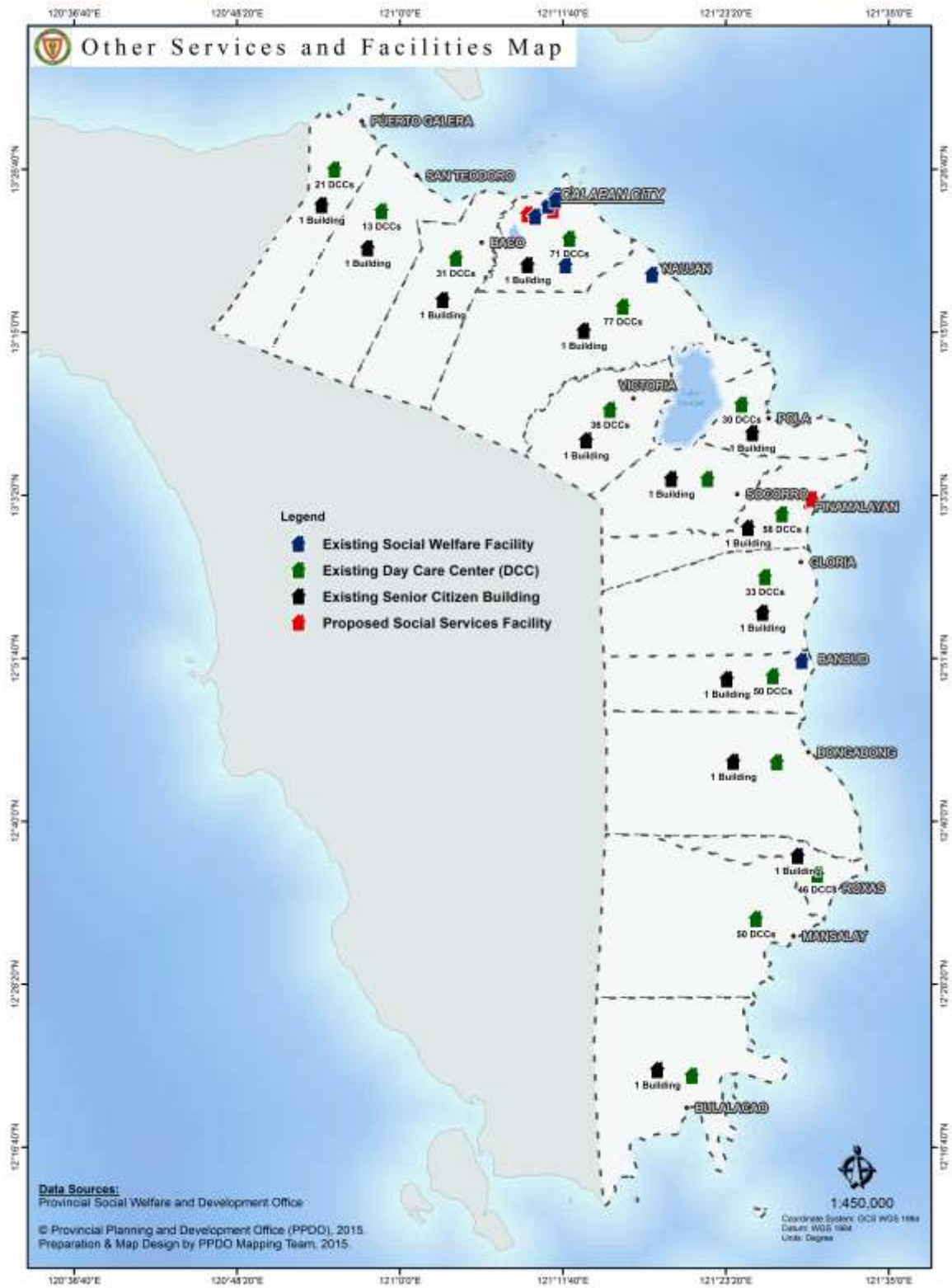
E. SOCIAL WELFARE SERVICES

Municipality	No. of Social Worker	No. of Day Care Worker	No. of Day Care Centers	No. of Children Served	No. of Registered Senior Citizens	
					Male	Female
Baco	2	19	19	946	1,478	1,030
Bansud	2	53	54	1,244	1,137	684
Bongabong	3	34	34	1,266	1,922	1,069
Bulalacao	0	48	48	1,085	955	560
Calapan City	10	71	71	2,526	6,300	3,970
Gloria	3	33	33	1,324	1,407	881
Mansalay	0	56	56	1,128	1,600	
Naujan	3	77	77	1,868	3,935	
Pinamalayan	3	58	58	2,094	2,930	1,878
Pola	2	29	28	866	1,322	1,011
Puerto Galera	2	17	16	601	843	586
Roxas	1	46	46	2,336	2,077	
San Teodoro	2	14	14	355	425	146
Socorro	1	42	42	1,043	1,283	805
Victoria	1	36	36	897	151	124
PGOM-PSWDO/DSWD	12	2	1	50		
Oriental Mindoro	47	635	633	19,629	27,765	12,744

Source: Provincial Social Welfare and Development Office, 2015



Social Welfare Services and Facilities Map



Source: Provincial Planning and Development Office, 2015





F. PROTECTIVE SERVICES

1. Crime Statistics and Protective Facilities

	No.		No.
a. Crime Statistics		c. Crime Against Property	
Crime Volume	2,310	Robbery	130
Crime Solved	1,643	Theft	200
Crime Unsolved	667	Carnapping	43
Crime Solution Efficiency (%)	71.13	Cattle Rustling	3
Ave. Monthly Crime Rate (AMCR) (%)	23.60	d. Facilities	
		Building	7
b. Crime Against Person		Serviceable Vehicles	
Murder	57	Patrol Jeep	31
Homicide	75	Patrol Cars	9
Physical Injuries	646	Motorcycles	13
Rape	97		

Source: Philippine National Police, 2015

2. Fire Prevention

Municipality	No. of Fire Stations	No. of Fire Trucks			No. Office Personnel
		BFP	LGU	NGO	
OPFM*					8
Baco	1		1*		1
Bansud	1	2	1		10
Bongabong	1	1			8
Bulalacao	1	1			5
Calapan City	1	3	2	3	17
Gloria	1	2			9
Mansalay	0	1	1		5
Naujan	1	2	1*		9
Pinamalayan	1	1	1	1	11
Pola	1	2			9
Puerto Galera	1	2*			7
Roxas	1	1			9
San Teodoro	1	1	1		1
Socorro	0	1	1*		2
Victoria	1	2	1		9
TOTAL	13	22 (1*)	10 (3*)	4	120 (5 NUP)

Note: OPFM – Office of the Fire Marshal

* - unserviceable

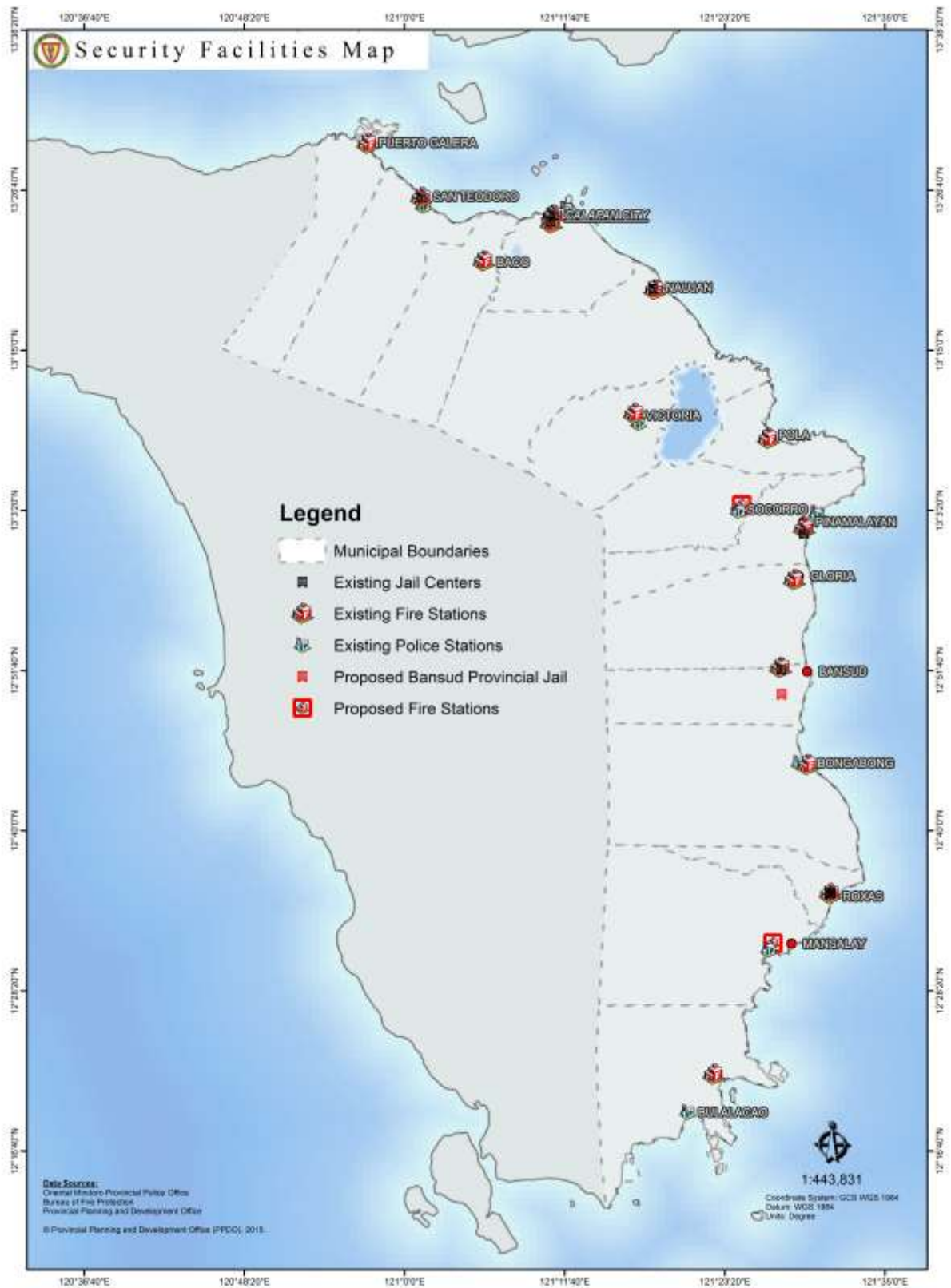
NUP – Non-Uniform Personnel

Source: Bureau of Fire Protection, 2015





Security Facilities Map



Source: Provincial Planning and Development Office, 2015



Financial Profile

A. INCOME CLASSIFICATION OF CITY/MUNICIPALITY

City/Municipality	Class
Oriental Mindoro	1 st
Baco	3 rd
Bansud	2 nd
Bongabong	1 st
Bulalacao	3 rd
Calapan City	3 rd Class Component City
Gloria	3 rd
Mansalay	2 nd
Naujan	1 st
Pinamalayan	1 st
Pola	3 rd
Puerto Galera	1 st
Roxas	2 nd
San Teodoro	4 th
Socorro	3 rd
Victoria	2 nd

Source: Provincial Treasury Office, 2015

B. ANNUAL INCOME AND BUDGET PER CITY/ MUNICIPALITY

City/ Municipality	Income [Php]	Budget [Php]
Baco	94,254,036.89	98,764,696.43
Bansud	111,627,412.95	112,729,194.54
Bongabong	173,331,842.98	189,383,045.29
Bulalacao	104,568,224.87	103,680,244.72
Calapan City	573,578,923.09	570,643,290.11
Gloria	7,470,416.63	118,865,072.72
Mansalay	141,328,692.35	144,284,553.30
Naujan	213,577,206.86	234,694,336.36
Pinamalayan	184,096,122.96	189,074,646.00
Pola	83,700,855.91	124,165,515.23
Puerto Galera	136,426,252.29	129,512,254.00
Roxas	113,080,301.23	112,891,989.00
San Teodoro	85,111,694.12	85,650,597.68
Socorro	110,201,714.33	107,882,277.97
Victoria	113,421,966.48	128,518,225.05
Total	2,245,775,663.94	2,450,739,938.40

Sources: Provincial Treasury Office, Provincial Budget Office, 2015



C. INCOME AND EXPENDITURES, PROVINCIAL GOVERNMENT OF ORIENTAL MINDORO

ITEM	AMOUNT (PhP)
Income and Expenditures	
Income (General & Special Educ. Fund)	1,251,444,314.64
Expenditures/Obligations	1,067,505,506.92
Total Revenues by Source	
Tax Revenue/Special Education Tax	62,946,266.45
Permit and Licenses	789,000.00
Service Income	41,572,420.72
Business Income	36,903,264.26
Other Income (Interest Income, IRA, Misc. Income)	1,079,835,542.96
Income from Grants and Donations	29,397,820.55
Total Expenditures by Object* – GF and SEF	
Personal Services	366,000,402.74
MOOE	415,932,381.63
Capital Outlays	381,489,293.45

Source: Provincial Accounting Office, 2015

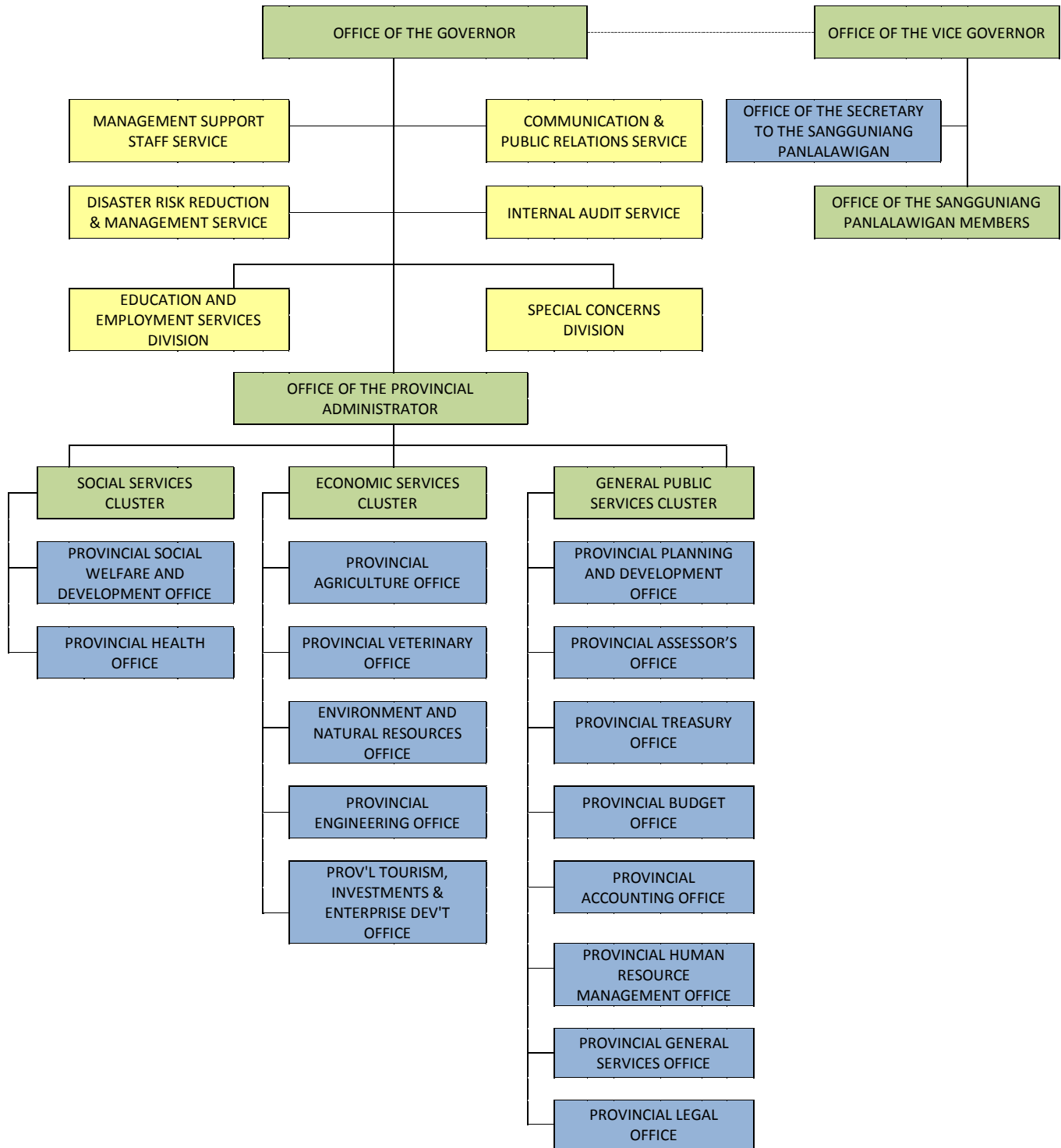
Note: *including continuing appropriation





Institutional Profile

A. ORGANIZATIONAL CHART OF THE PROVINCIAL GOVERNMENT OF ORIENTAL MINDORO



EXECUTIVE BRANCH

LEGISLATIVE BRANCH




B. PROVINCIAL GOVERNMENT PERSONNEL BY OFFICE (as of December 31, 2015)

	Name of Office	No. of Plantilla Positions	No. of Filled-up Positions
1	Office of the Governor	1	1
	Management Support Staff Division	14	9
	Internal Audit Service Division	6	5
	Special Concerns Division	9	9
	Disaster Risk Reduction and Management Division	6	5
	Communication and Public Relations Division	14	9
	Education and Employment Services Division	7	5
2	Office of the Vice-Governor and Sangguniang Panlalawigan	54	44
3	Office of the Provincial Administrator	29	22
4	Provincial Planning and Development Office	35	23
5	Provincial Treasury Office	37	29
6	Provincial Accounting Office	24	23
7	Provincial Budget Office	17	10
8	Provincial Assessor's Office	30	26
9	Provincial Human Resource Management Office	20	15
10	Provincial General Services Office	40	35
11	Provincial Legal Office	13	11
12	Provincial Social Welfare and Development Office	21	18
13	Provincial Health Office		
	Technical Services	36	28
	Oriental Mindoro Provincial Hospital	182	134
	Oriental Mindoro Central District Hospital	47	19
	Naujan Community Hospital	23	21
	Bulalacao Community Hospital	20	19
	Oriental Mindoro Southern District Hospital	68	51
14	Provincial Engineering Office	117	104
15	Provincial Agriculture Office	51	41
16	Provincial Veterinary Office	22	16
17	Environment and Natural Resources Office	25	19
18	Provincial Tourism, Investment and Enterprise Development Office	20	12
	Total	989	762

Source: Provincial Human Resource Management Office, 2015




C. PROVINCIAL GOVERNMENT PERSONNEL BY STATUS (as of December 31, 2015)

STATUS	Male	Female	Total
<i>Permanent</i>	324	402	726
First Level	212	174	386
Second Level	112	228	340
<i>Co-Terminous</i>	10	12	22
First Level	6	7	13
Second Level	4	5	9
<i>Elective</i>	10	4	14
TOTAL	344	418	762

Source: Provincial Human Resource Management Office, 2015

